

Since 1957



SOUTHERN ENGINEERING CO LTD

Marine & Offshore Engineering

ENGINEERING/DESIGN, PROCUREMENT & CONSTRUCTION CONTRACTOR (EPC)



Part of



Over 60 years' experience in delivering safe, well-executed, capital-efficient ENGINEERING/DESIGN, PROCUREMENT and CONSTRUCTION (EPC) solutions to clients throughout the East African region.



Southern Engineering Co. Ltd (SECO) is an ISO 9001 accredited solution driven engineering company specializing in marine and offshore engineering.

At SECO, our aim is to be the engineering company of choice in all the industrial sectors we serve in the East African region. As an innovative and fast-growing organization, our highly skilled team of engineers and craftsmen backed with our 65 year heritage enables us to deliver engineering solutions to the most demanding operational and technical challenges faced by

our customers around the region.

Our Civil Works and Infrastructure Division is equipped with

- ❖ Earth Moving Equipment
- ❖ Heavy Lifting Mobile and Crawler Cranes (10 - 250 tonnes)
- ❖ Bored and Driven Piling Rigs
- ❖ Piling Barges
- ❖ Material Barges
- ❖ Modular Pontoons





SECO is Class A Civil Construction Company.

**Our work spans
large-scale urban
infrastructure
projects through
to remote
locations, with
the ability
to mobilise
resources to any
location across
East Africa.**

Our civil construction and engineering contracting services include:

- ❖ Topography and hydrography survey works
- ❖ General site clearance & all kind of bulk earthworks works.
- ❖ All shallow foundation works including Deep foundation works such as Bored Cast Insitu piles, Driven Cast insitu piles, steel piles of various diameters, H piles, etc.
- ❖ Retaining structures for basement including concrete retaining walls, steel sheet piles, soldier piles, etc.
- ❖ Installation of all underground infrastructure / utilities including potable water, fire mains, storm water line, sewer, electrical and communications lines.
- ❖ All kind of concrete and super structure works.
- ❖ Steel structures for warehouse, workshops, manufacturing facilities, cold stores, etc.
- ❖ Construction / upgrades of roads and car parks including asphalt, spray seal, concrete and block paving
- ❖ Installation of road furniture such as upright kerbs, signage, line marking, wheel stops and bollards
- ❖ Landscaping hard – street furniture, feature walls, footpaths, edging, timber boardwalks, water features, fencing, lighting and concrete structures
- ❖ Landscaping soft – cultivation, top soiling, planting and hydro seeding
- ❖ Civil demolition of existing infrastructure for recycling
- ❖ New builds for industrial and commercial premises
- ❖ Maintenance of commercial and industrial facilities

Oilseed collection and pressing plant (Agri-hub)

Location: Bonje, Kwale

Client: ENI Kenya B.V

The construction of an oilseed collection and pressing plant (agri-hub) in Bonje, kwale, Kenya.

Scope of works:

- ❖ Process Building
- ❖ Pump House
- ❖ Fire Water Tank
- ❖ Utility Building
- ❖ Ablution & Changing
- ❖ Workshop & Shed
- ❖ Storage Tank Foundation
- ❖ Loading Gantry
- ❖ Weigh Bridge House & Structure
- ❖ Administration Building
- ❖ Canteen & Kitchen
- ❖ Roads & Landscape
- ❖ Fire Fighting Network
- ❖ Oil Storage Tank
- ❖ Fire Water Tank
- ❖ Bagging System



Lake Turkana Wind Power Project

Location: Marsabit, Kenya

Client: LTWP Consortium

Lake Turkana Wind Power Project is a wind farm in Loiyangalani District, in Marsabit County, approximately 545 kilometres, by road, north of Nairobi, Kenya's capital city. SECO executed the turnkey infrastructure and camp development for the entire LTWP staffs and workmen. Accommodation facilities

- ❖ Kitchen & dining facilities, Ablution & storage facilities
- ❖ Offices/conference rooms, banking & shopping facilities
- ❖ Club house, police & guard posts

- ❖ Village workshop, Offices/conference rooms, banking & shopping facilities
- ❖ Roads within LTWP Village
- ❖ Fuel station, Sports, Medical & Laundry facilities
- ❖ Fresh & non-potable water system
- ❖ Waste water, rain water collection & sewerage treatment system
- ❖ Waste storage & waste incineration plants
- ❖ Fire detection, signage & fire fighting facilities
- ❖ Erection of 365 wind turbines



Alpha Business Park

Location: Nairobi, Kenya

Client: East African Sea Food
Limited (EASF)

A milestone EPC project spread over an area of 82,656 square meter integrated logistics park providing cold storage services, dry warehousing and sufficient laydown area along the busy Eastern bypass.

- ❖ Covered warehouse storage area consisting of
- ❖ Suite 1 – 700 Square meters
- ❖ Suite 2 & 3 - 1,440 square meters each
- ❖ Suite 4 & 5 – 3500 square meters each
- ❖ Sufficient paved laydown open area for each suite

- ❖ Each section has dedicated workshop / admin office & storage space of 230 square meters
- ❖ 25,000 square meters Non dedicated open area for general and out of gauge cargo
- ❖ Storage & Distribution of Frozen, Chilled and Ambient food Products
- ❖ Eight (9) Multi-temperature and multi-commodity cold stores suitable for food grade products with temperatures going as low as -40°C for 5, 000 pallet positions
- ❖ Dedicated ambient warehouse for 5,000 pallet positions



Oil & Gas Machine Shop

Location: Mombasa, Kenya

Client: Alpha Group

Exclusively located at the Mbaraki Wharf, 5 minutes drive time from the CBD with close proximity to the port of Mombasa and the Mombasa International Airport (MIA).

- ❖ Warehouse 1 fitted with a 10-ton overhead crane
- ❖ Warehouse 2 fitted with a 2-ton overhead crane
- ❖ Wash bay area complete with an oil/water separator machine and a pressure washing machine
- ❖ Open lay-down area & loading bay
- ❖ Waste management system
- ❖ Ablution block complete with Changing rooms
- ❖ Ample parking bay
- ❖ 100,000-liter water tank
- ❖ Meeting rooms & conference facilities
- ❖ Offices complete with comfort cooling and compliant lighting
- ❖ 24-hour private security, with an electric perimeter wall covering the whole facility



Fujita Camp

Location: Alpha Logistics Park,
Mombasa, Kenya

Client: Fujita Corporation

Engineering, Procurement and construction of camp & office facilities for Fujita – Mitsubishi Corporation. The project was completed within a duration of 4 months meeting international standard and as per client requirement. Scope of works executed are

- ❖ Site Grading, levelling & compaction
- ❖ Fully furnished office facility for 300 occupants including trailing facility for 100 occupants, board room, meeting room, pantry, etc.
- ❖ Accommodation facility for 50 single occupants

- ❖ VIP and Workers kitchen and dining facility to suite for 100 occupants per sitting.
- ❖ World class gym and concrete top basketball facility
- ❖ All civil works for the completion of site facilities but not limited to service roads, car parking, fences and gates, storm water drainage, etc.
- ❖ External and internal utilities but not limited to water, power, drainage, sewer, external, solar lighting, fencing, roads, etc.



Alpha Logistics Park

Location: Mombasa, Kenya

Client: Alpha Logistics Services
(Epz) Ltd (ALSL)

A 62,500 square metre yard development right from scratch which includes:

- ❖ Major cutting and filling works
- ❖ Close to 1500 running meters of boundary wall with electrical fence.
- ❖ Slope protection works
- ❖ Ground improvement and stabilisation for 40,000 square meter
- ❖ Reefer container depot with a capacity to hold 3,000 TEU's
- ❖ 1050 sqm of office and workshop facility.
- ❖ All utilities including power, storm water drainage, CCTV, yard lighting, etc.



Cold Warehousing Facility

Location: Miritini, Mombasa

Client: Southern Shipping Services
Ltd (SSSL)

Engineering, Procurement and Construction (EPC) of cold storage and reefer depot facility.

- ❖ Demolition of old concrete structures
- ❖ Site grading and levelling works
- ❖ Construction of 5000 sqm of covered multi-temperature cold storage facility
- ❖ Office facility
- ❖ Covered workshop
- ❖ Yard development
- ❖ All utilities including power, storm waterdrainage, CCTV, yard lighting, etc.



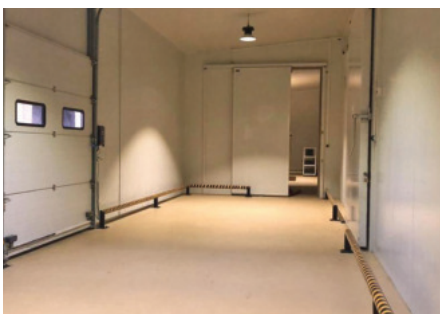
Warehouse Facility

Location: Kigali, Rwanda

Client: Alpha Choice Rwanda Ltd

Engineering, Procurement and construction of 7,350 Square Metre Facility

- ❖ 400 mtr long Boundary wall with grill and retaining wall
- ❖ Backfilling
- ❖ Grading
- ❖ Hard core boulder packing for base preparation
- ❖ Interlock paving block laying
- ❖ 2400 sqr. feet Power room with office block building
- ❖ 800 sqr. feet Ablution Block building
- ❖ Cold Rooms
- ❖ Installation of Transformer and Power Distribution system



Kisumu Oil Jetty

Location: Kisumu, Kenya

Client: Kenya Pipeline Company
Ltd (KPC)

CIVIL MECHANICAL & ELECTRICAL WORKS:

- ❖ Construction of approach road of 252 m long & 6 m wide
- ❖ Piled Approach Bridge of 227 m long 6.4 m wide along with a jetty head and 8 mooring & berthing dolphins
- ❖ Capital dredging works, Construction of Control room, Panel room, guard house, office facility, etc.
- ❖ Laying of product pipeline of approx. 3.70 KM for JET A1, MSP, AGO & IK with required isolation valves, motorized valves & DBB valves
- ❖ Safety systems include approx. 0.8 KM of firefighting lines with hydrants & foam tanks
- ❖ Supply, installation & commissioning of fuel loading skid for each stream with a capacity of 300 cum per hour
- ❖ Providing & installation of switchboards, electrical & control cables, street lights, CP system & fire alarm system
- ❖ Modification of existing PLC system for integration of fuel loading system with the existing system



Nyamisati Jetty

Location: Nyamisati, Tanzania

Client: Tanzania Ports Authority
(TPA)

Nyamisati is a village in northern Rufiji delta, the village is located about 200km south of Dar es salaam, and is located in south-western part of Pwani region, it is the only best common ferry connection to Mafia Island and other small Island. Nyamisati Jetty is constructed for the Tanzania Ports Authority (TPA).

- ❖ Design and construction of Jetty with dolphins & Approach bridge.
- ❖ Construction of Passenger Lounge, Toilets, water tank tower, Cargo Shed, engineers office and accommodation.
- ❖ Construction of concrete access road
- ❖ Supply and installation of Navigation Aids
- ❖ Provision of Perimeter Fence.



Alpha Pemba Residence

Location: Pemba, Mozambique

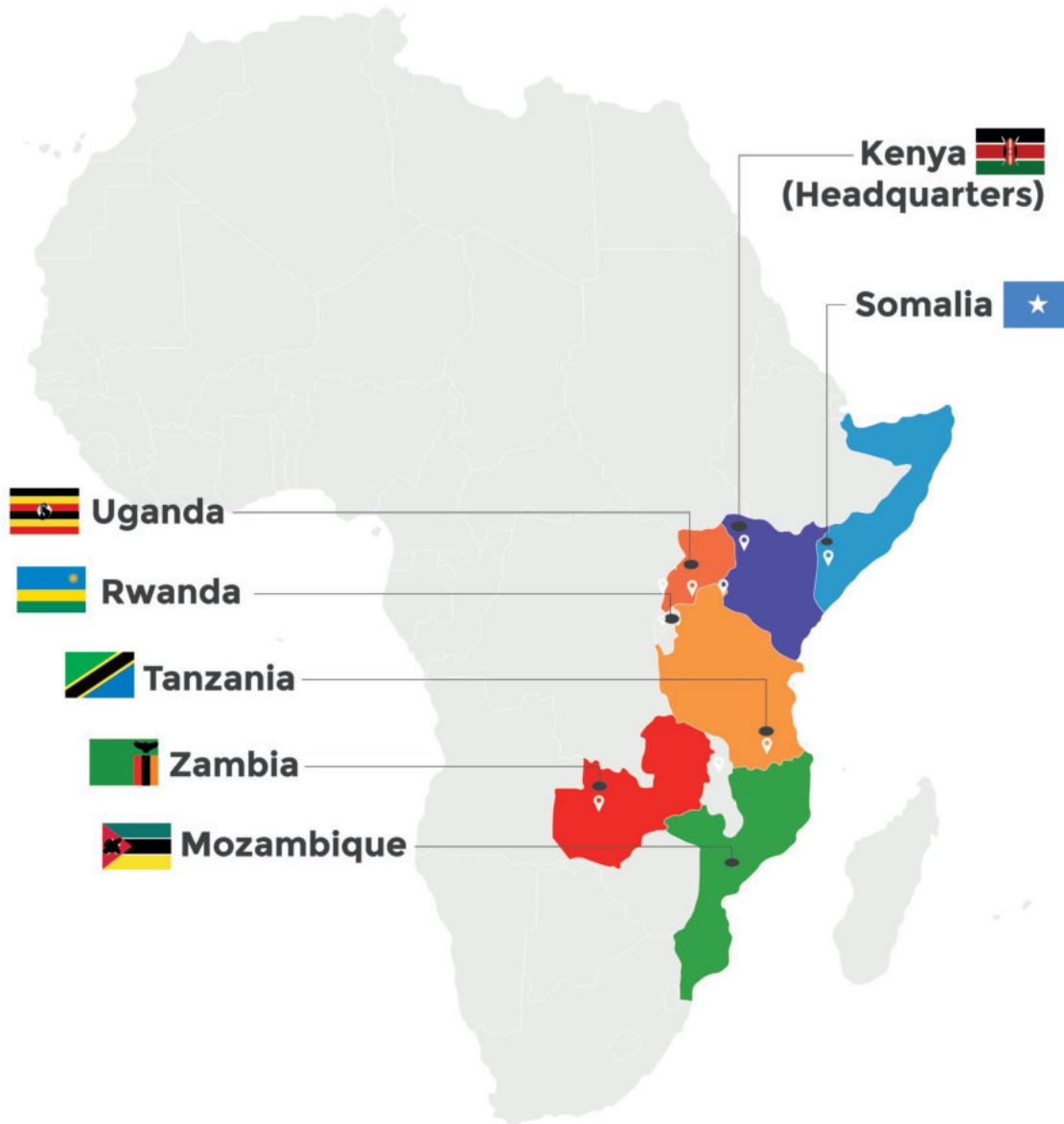
Client: Alpha Choice Mozambique
SA (ACM)

The construction of a contemporary lodging facility located in the heart of Pemba town.

The modern mixed-use development has been thoughtfully designed to offer its residents a spacious, welcoming appeal with abundant open communal areas and recreational facilities that can be enjoyed by all ages, making the development ideal for travelling professionals. Location is just 2.6 km from Aeroporto de Pemba and 5km from Pemba Port, a convenient location for personnel in Transit to and from Palma, crew changes, and other project teams working in Pemba.

- ❖ Meeting Rooms
- ❖ Recreational Courtyard
- ❖ Ensuite Accommodation units
- ❖ CCTV Cameras





Kenya

**Southern Engineering Co. Ltd
(SECO)**

Mombasa - Head & Sales Office

Mbaraki Wharf near Likoni Ferry

P.O BOX 84162 - 80100, Mombasa
Tel: +254 722 203 156
Tel: +254 733 203 156
Email: seco@alphakenya.com

Nairobi

Alpha Business Park, along the
Eastern By-pass

Tel: +254 722 203 156
Tel: +254 733 203 156
Email: seco@alphakenya.com

www.secoafrika.com

www.alphaafrica.com

Tanzania

Dar es Salaam

Ali Hassan Mwinyi Road,
Plot 40, Block 72

P.O. BOX 8316, Dar es Salaam
Tel: +255 788 862 204
Tel: +255 22 212 8828 / 54
Email: seco@alphakenya.com

Mozambique

Pemba

**Southern Engineering Company
Mozambique, LDA**

Zona Do Aeroporto, Avenida 25 de
Setembro, No .2713, Bairro Alto Gin-
gone, Cidade De Pemba,
Provincia De Cabo Delgado

Tel: +258 27 220 609
Email: seco@alphakenya.com

Uganda

**SECO Marine (U) Ltd - Free Zone
Company**

Kampala - Corporate Office

Plot 10 Kiwana Road, Bukoto

P.O BOX 27929, Kampala

Entebbe - Shipyard

Plot 14, Airport Road, Fishways Close

Tel: +256 393 261 046 / 7
Email: seco@ug.secoafrika.com



Part of

