

Since 1957



# SOUTHERN ENGINEERING CO LTD

Marine & Offshore Engineering



Part of



# Index

- 
- 
- 04 SECO
  - 06 Mission & Vision
  - 07 Capabilities
  - 08 Shipbuilding
  - 09 Past Deliveries
  - 12 Ship Repairs, Maintenance & Conversions
  - 13 Dry Docking Services
  - 14 Recent Repairs
  - 16 Rebuilds
  - 17 Accredited Marine Class Survey Services
  - 18 Structural Fabrication & Installation
  - 20 Process Piping & Instrumentation
  - 22 Machine Shop Services
  - 23 Inspection & Non Destructive Testing (NDT) Services
  - 24 Storage Tanks
  - 26 Certified 6G Welders





27 Dredging & Reclamation

28 Survey & Investigation Works

30 Onshore & Offshore Piling

32 Marine Construction

34 EPC Contractor

Heavy Lifting Solutions 36

Containerized Solutions 38

Contacts 40





# Meeting East Africa's Complex Engineering Challenges

## Certifications



**Southern Engineering Co. Ltd (SECO) is an ISO 9001 accredited solution driven engineering company specializing in marine and offshore engineering.**

At SECO, our aim is to be the engineering company of choice in all the industrial sectors we serve in the East African region. As an innovative and fast-growing organization, our highly skilled team of engineers and craftsmen backed with our 65 year heritage enables us to deliver high-end engineering solutions to the most demanding operational and technical challenges faced by our customers around the region.

From our origins as a ship repair specialist, SECO has developed unparalleled operational expertise in the marine environment, providing comprehensive products, services, and support to the marine renewables, shipping, and defense industries.

As a company, we place a great emphasis on effective client relationships and client satisfaction. We invest time to understand our customers' requirements and business strategies in order to tailor the best possible service solutions to their existing and future needs.





# Capabilities

## ■ Shipyard

- Shipbuilding
- Ship Repairs
- Ship Maintenance
- Ship Conversions
- Accredited Marine Class Survey Services
- Dry Docking Services
- Machine Overhaul

## ■ Onshore & Offshore Piling

- Bored Cast-in-Situ Piles (BCIS)
- Driven Cast-in-Situ Piles (DCIS)
- Steel Pipe Piles (SPP)
- Mini / Micro Piles
- Under Reamed Piles
- Shoring System
- Ground Anchors
- Solar Piles
- Sheet Piles

## ■ Plant Maintenance Services

## ■ Mechanical Engineering

- Structural Fabrication & Installation
- Machine Shop Services
- Process Piping & Instrumentation
- Storage Tanks
- Inspections & Non Destructive Testing (NDT) Services
- Heavy Lifting Solutions

## ■ Survey & Investigations

- Topographic Survey
- Geotechnical Survey
- Bathymetric Survey
- Seismic Survey

## ■ Engineering/Design, Procurement & Construction Contractor (EPC)

## ■ Marine Construction

- Ports
- Harbors
- Jetties
- Bridges
- Sea Walls
- Shore Protection
- Dredging & Reclamation

## ■ Containerized Solutions

- Shipping Container Conversions
- Containerized Solutions Rentals

## ■ Equipment Hire

- Cranes
- Earth Moving Equipment
- Forklifts



# Reshaping the Future of Engineering & Construction





## ■ Values

We believe that quality and a relentless commitment to continual improvement are essential to our success. To this end, we define quality as understanding the customer's expectations, agreeing on performance and value, and providing products and services that meet expectations consistently.



## ■ Vision

To be the leading infrastructure and engineering organization in East Africa that meets international standards.



## ■ Mission Statement

In order to realize our vision, our mission must be to meet and exceed the expectations of our customers, partners, and employees while earning their loyalty. In this way, we will ensure that our profit, quality, and growth goals are met.

## ■ Ethics & Integrity

We value how results are achieved and will demonstrate honest and ethical behavior in all our activities. Choosing the course of the highest integrity is our intent, and we will establish and maintain the highest professional and personal standards.

## ■ Growth & Development

We strongly believe in the dignity and value of our people. We will consistently treat each other with respect and strive to create an organizational environment in which individuals are encouraged and empowered to contribute, grow, and develop themselves and help to develop each other and the company.



# Shipbuilding



SECO builds a wide range of highly efficient ships with lasting competitiveness, all built under the International Association of Classification Societies (IACS) classification. We offer our combined know-how in the areas of design, engineering, project management, construction, installation, and commissioning.

We are shipbuilders, delivering quality on time, as we have done since 1957. SECO's shipyard is located near the entrance of the port of Mombasa, Kenya.

At SECO, customers get experience, reliability, and shipbuilding quality that justify a long-term investment. We focus on innovative solutions and methods, project management, and efficient logistics and outfitting methods. Streamlined production provides a high level of flexibility and quality.





# Past Deliveries

---

## Rubani 1, 2 and 3



Type: **Pilot Boats**

Year: 2021

Class: Bureau Veritas

Client: Tanzania Ports Authority (TPA)

Length: 20.00m

Breadth: 5.50m

Capacity: 12 seats + 3 Crew Accommodation

## Hapa Kazi 1 and 2



Type: **Cargo Barge**

Year: 2020

Class: Bureau Veritas

Client: Tanzania Ports Authority (TPA)

Length: 77.98m

Breadth: 11.83m

Capacity: 2000 MT / 72 TEU

## Alpha Kirawira



Type: **Multi-Purpose Vessel**

Year: 2009

Class: IRS

Client: Alpha Logistics, Tanzania

Length: 64.80m

Breadth: 15.50m

Capacity: 1500 MT / 70 TEU

# Past Deliveries

---

## Alpha 2500



Type: **RO-RO Barge**

Year: 2016

Class: IRS

Client: Alpha Logistics, Kenya

Length: 65.0 m

Breadth: 18.0 m

Capacity: 2564 T

## MV Umurage



Type: **Research Boat**

Year: 2017

Class: Bureau Veritas

Client: EDCL, Rwanda

Length: 16.0 m

Breadth: 4.20 m

Capacity: 4 Persons, Both Genders

## MV Albert Nile 1



Type: **Modular Passenger Ferry**

Year: 2015

Class: Bureau Veritas

Client: UNRA, Uganda

Length: 42.44 m

Breadth: 17.26 m

Capacity: 200 Passengers and 20 Vehicles



## Alpha Trion



Type: **Jack-Up Barge**

Year: 2011

Class: IRS

Client: Alpha Logistics, Kenya

Length: 35.70 m

Breadth: 17.90 m

Capacity: Water+Soil Penetration: 20.5m

## Mussa K



Type: **Double Skin Bunker**

Year: 2011

Class: IRS

Client: Alfoss Energy Ltd, Kenya

Length: 51.00m

Breadth: 11.00m

Capacity: 1100 Tonnes

## MV Obongi, MV Laropi and MV Bisina



Type: **Modular Passenger Ferry**

Year: 2010

Class: Bureau Veritas

Client: UNRA, Uganda

Length: 46.60 m

Breadth: 9.80 m

Capacity: 96.80T

# Ship Repair, Maintenance & Conversions

---

■ Whatever the vessel, whatever the task, we have the skills and facilities to undertake structural repairs or replace equipment on board any class of vessel, be it cargo, inshore, naval, offshore, support, tankers, workboats, or yachts. Offshore structures, including FPSOs, rigs, and jack-ups, are also a specialty.

able to handle everything from basic steelwork and piping to the most complex electrical and mechanical systems, as well as the repair and refit of interior accommodation. . Specialist systems such as propulsion, thrusters, electronics, or dredging equipment may be handled in-house.

expert project managers work alongside our clients' representatives to ensure a smooth, fast, and harmonious experience. We also offer a range of vessel maintenance solutions for regular customers that include predictive, preventative, and condition-based packages that all but eliminate the risk of equipment failure.

Whether a client's ship has suffered a simple equipment failure or more serious matters such as collisions, grounding, or fire, our shipyard is

Additional services, including cleaning and painting, special surveys, and warranty work for third parties, are all available. Throughout the job, our

Whether it's a containership, an LNG carrier, a naval frigate, a fishing boat, or a fully rigged ship, we are ready to meet your needs.





# Dry Docking Services

- With professional planning, preparation, and execution, we make dry docking predictable and efficient.

The single largest cost for any ship owner during the lifetime of vessel ownership is the cost of regular dry docking.

SECO's engineers and the experienced dry dock team have a record of efficient docking services.

Dry docking is a high-risk job, and if not managed well through good preparation and tight controls, costs can quickly spiral and time in the dock can spin out of control.

We are able to carry out the effective planning of dry docking and other major repairs, retrofits, and conversions, as well as the supervision of these services, to a high standard.

The SECO Dry Dock is ideally located near the entrance of the port of Mombasa, and our dock is at the core of our modernized shipyard.

## ■ Principal Dock Particulars:

- **Length:** 67.0 m
- **Breadth (External):** 19.0 m / 24.0 m
- **Breadth (Internal):** 14.0 m / 21.0 m
- **Depth:** 7.5 m
- **Lifting capacity (GT):** 900 Tons
- **Propulsion:** Non propelled



# Recent Repairs

---

## MV Falcao



Type: **Anchor Handling Tug**

Class: Bureau Veritas

Client: Alpha Logistics, Kenya

Length: 40.0 m

Breadth: 11.8 m

Bollard Pull: 50 Tons

## Simba III



Type: **Tug**

Class: Bureau Veritas

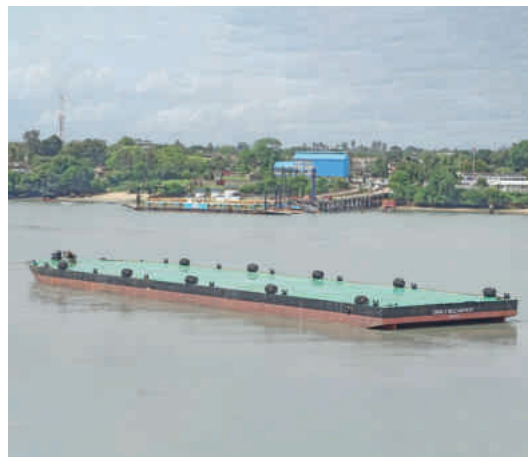
Client: Kenya Ports Authority (KPA)

Length: 31.0 m

Breadth: 9.0 m

Capacity: 313 T

## Enhils Mozainvest



Type: **Heavy Cargo Barge**

Class: Bureau Veritas

Client: Enhils

Length: 113.1 m

Breadth: 28.0 m

Capacity: 12,000 T



## Cat Cocos



Type: **Catamaran Passenger Ferry**

Class: Bureau Veritas

Client: Cat Cocos, Seychelles

Length: 38.0 m

Beam: 11.0 m

Capacity: 558 Passengers

## RV Mtafiti



Type: **Research Vessel**

Class: Bureau Veritas

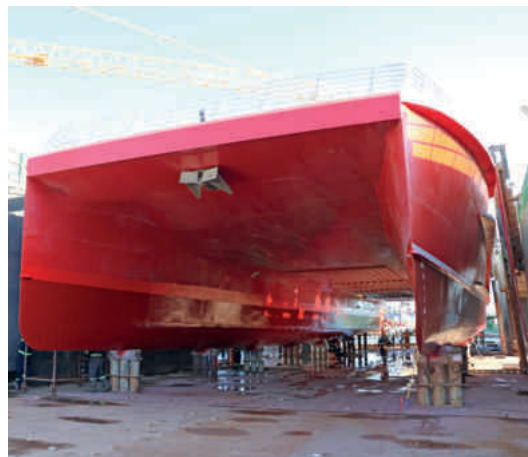
Client: KMFRI, Kenya

Length: 55.0 m

Beam: 9.0 m

Power: 1192 kW

## MV Kilimanjaro IV



Type: **Catamaran Fast Ferry**

Class: Bureau Veritas

Client: Azam Marine

Length: 44.7 m

Beam: 11.5 m

Capacity: 620 Passengers

# Ship Rebuilds

---

## Alpha Jimbo



Type: **Multi-purpose Vessel**

Class: Bureau Veritas

Client: Alpha Logistics, Kenya

Length: 31.0 m

Beam: 8.0 m

Capacity: 85 T

## Alpha Rotterdam



Type: **Split Hopper Barge**

Class: IRS

Client: Alpha Logistics, Kenya

Length: 59.4 m

Depth: 3.35 m

Capacity: 515 T

## Wave 2



Type: **Flat Top Barge**

Class: IRS

Client: Alpha Logistics, Kenya

Length: 54.6 m

Breadth: 15.3 m

Capacity: 2000 T



# Accredited Marine Class Survey Services

■ As accredited marine surveyors, we provide a reliable assessment of a vessel's condition. We provide survey inspections with elaborate marine survey reports, enabling your business decisions.

This way, our clients save time and money. Independent surveys and reports of the current condition, class status, and life history of a vessel provide vital information to help evaluate a proposed investment.

This vital information will help evaluate the needed investment. Our survey services include:

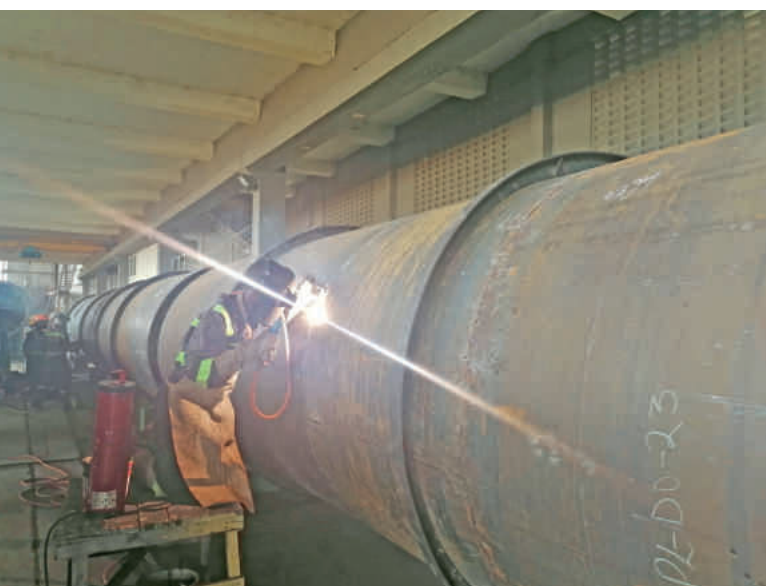
- **Survey project management and support**
- **General positioning support (Trenching, diving, ROV & excavation)**
- **Precise positioning services, surface and sub-sea**
- **Subsea asset inspection –**

**structures, pipelines, umbilicals and cables**

- **Construction support - as laid, as trenched and as built surveys**
- **Out of straightness (OOG) surveys**
- **Pre-lay grapnel runs (PLGR)**
- **Data management services**
- **Survey and navigational equipment supply**







# Structural Fabrication & Installation

■ A full-service manufacturer of nearly all things metal, from detailed decorations to giant construction steel.

We provide conceptual drawings as part of our full-service metal fabrication offering.

Based on our clients' needs and requirements, our in-house engineers are able to develop concepts into a properly certified specification.

Our guiding philosophy has been: "Tool up to handle any custom metal fabrication job, start to finish, right here

on the premises."

To that end, we've assembled a powerful lineup of machines and capabilities that can take on almost any metal challenge, as well as a staff of top-flight professionals who make it happen.

Our under-one-roof metal fabrication facilities, plus in-house quality inspectors overseeing every step of every project, mean tight control over quality and costs that multi-vendor approaches simply can't match.

## Services

- ❖ Ideation
- ❖ Shop Drawing
- ❖ Cutting & Bending
- ❖ Assembly & Component Finishing
- ❖ Site Delivery & Erection

## Sectors We Serve

- ❖ Oil & Gas
- ❖ Mining
- ❖ Infrastructure
- ❖ Manufacturing





TBL Template, LNG Project, Mozambique



Steel Pipe Bridge, BTL, Kenya



Screen Unit, Piacentini & Sons, Australia





# Process Piping & Instrumentation

---

■ Piping systems are integral to transporting gas, liquids, and slurries throughout your production plant. They need to be highly reliable to ensure the efficiency and uptime of a production process.

Therefore, these systems need to be manufactured, assembled, maintained, inspected, and repaired with the utmost expertise to ensure pipe integrity. We are your one-stop piping partner for greenfield installations and brownfield modifications.

Our piping experts are ready to fabricate your spools in our shop and install them on-site. We also have the full spectrum of techniques to reinstate the integrity of your piping and apply modifications to piping systems with minimal impact on production. With the right people, expertise, and facilities in place, we can handle any project. This effective combination ensures all safety standards are met while remaining on schedule and within budget.

## In Shop & On-Site Fabrication

The size and scope of projects determine whether it's more efficient to fabricate pipe in our fabrication shops or on-site. Our experienced fitters and welders are well trained to deliver simple and complex piping projects, including but not limited to pre-fabrication of piping spools, erection of spools, installation of pumps, inline instruments, boxing up, hydro testing, pre-commissioning, and assistance with commissioning. This whole process is fully traceable up to each single weld, from detail engineering and work preparation up to installation on site.

We have a pool of in-house NDT technicians who inspect welds to the required industry standards and client specifications. When in the field, the application of ultrasonic or close proximity radiography not only gets the job done safely but also ensures other work can continue.









# Machine Shop Services

---

■ We have comprehensive machine shop capabilities to repair, manufacture, and re-engineer spare parts.

From a repair perspective, our workshop machine shop can undertake many re-machining tasks, such as:

- **Machining impeller wear ring locations (to enable concentricity and correct tolerance)**
- **Skimming sleeves (to remove wear, pitting, etc.)**
- **Bore out bearing housings (for re-sleeving)**

Included within our repair service and machine shop capabilities is the reclamation of rotating equipment shafts.

This process includes machining, metal spraying or spiral welding, and re-machining to the correct tolerances.

From a replacement perspective, our workshop machine shop can undertake many machining tasks, such as:

- **Manufacture of Sleeves**
- **Manufacture of Wear Rings**
- **Manufacture of Bushes**
- **Manufacture of Bearing Housings**
- **Manufacture of Locknuts**

Machine shop equipment include but are not limited to lathes, horizontal and vertical boring machines, presses, milling machines.





# Inspections & Non Destructive Testing (NDT) Services

■ We aim to ensure that your asset or facility is safe and fit for purpose.

Machined parts and industrial structures can be complex systems that experience extreme loads and fatigue during their lifetime. Nondestructive testing (NDT) enables the inspection of these components without permanently altering the equipment. It is a highly valuable technique that is often used to validate the integrity of materials, detect instabilities, discover performance outside of tolerances, identify failed components, or highlight an inadequate control system.

As technology has progressed, the types of inspection and equipment selection processes have become more advanced. However, this has also made the inspection selection process more complicated. It is important to note that choosing the wrong inspection method can end up costing you a significant amount of wasted time and money.

Applicable inspection codes include AWS, ASME, API, EN etc.

## Services

- **Magnetic Particle Inspection (MPI)**
- **Liquid Penetrant Inspection (LPI)**
- **Ultrasonic Flaw Detection**
- **Hardness Testing**
- **Vacuum Box Testing**
- **Holiday Testing**
- **Ultra-Sonic Thickness Measurement (UTM)**
- **Visual Inspection**



# Storage Tanks

---

■ Our tank services, combined with our wider capabilities and in-house expertise, are ideal for both new-build storage sites and the refurbishment of existing facilities.

We build fixed and floating roof tanks, from small single tanks to large multi-tank projects. Having experience in repair and new-build capabilities reduces your interfaces' risk for a rapid return on investment. Our back-office approach minimizes your onsite costs and allows you easy access to experienced professionals when and where you need them.

## Repair & Modifications Include But Are Not Limited To:

- **Tank Shell Repair**
- **Tank Bottom Replacement**
- **Tank Jacking & Leveling**
- **Tank Capacity Expansion**
- **Interior/Exterior Roof Repair or Replacement**
- **Ladders & Stairways**
- **Nozzles, Manways & Accessories**
- **Hopper Replacement**
- **Tank Relocation**

## Turnkey Services

SECO provides flexible fabrication solutions, from small-scale replacements and repairs to modular elements for medium- to large-scale structures and fabrication management for mega projects. We deliver fabrication as a stand-alone service or as part of an integrated project.

Our fabrication shop can execute repair items, small- to medium-scale elements, and modular constructions. Through our project management capabilities, we are used to handling projects using multiple fabrication yards for large-scale builds.



1 Million Litre Tank, Lake Turkana Wind Power Project (LTWP), Marsabit, Kenya







# Certified 6G Welders

---

■ Welding professionals work in a number of different areas, specializing in different types of metals, materials, and types of welding. Welders can earn a number of different certifications that allow them to work with different materials and methods. Welding certificates certify that a welder is able to complete a specific type of weld.

This means that each type of certificate is related to welding a specific type of material into a specific position. A 6G weld is one of the hardest welds to do. It is welding an unmovable pipe at a 45-degree angle. This certification also tests the welder's ability to complete this weld from different angles and positions.





# Dredging & Reclamation

---

■ Dredging works are commonly described as the removal of sediments from underwater, which involves an excavation process. Soil and rocks are excavated for channel and harbor deepening and for land reclamation.

With years of experience, we can handle the entire process, from the preliminary survey through project completion. We seek to minimize the environmental impact of any dredging project and always carry out our activities with respect for the environment, reducing overflow and limiting turbidity.

## Solutions

- **Maintenance Dredging**
- **Land Reclamation**
- **Desilting Dams**



Kisumu Oil Jetty, Kenya

# Surveys & Investigations

■ Geotechnical investigations are performed by engineering geologists to obtain information on the physical and chemical properties of soil and rock around a site, to design earth retaining systems and types of foundations for proposed structures, and to repair distress to earthworks and structures caused by subsurface conditions. A geotechnical examination includes surface and subsurface exploration, soil sampling, and laboratory analysis. Geotechnical investigations are also known as foundation analysis, soil analysis, soil testing, soil mechanics, and subsurface investigation.

Surveying is the science and art of making all essential measurements to determine the relative position of points or physical and cultural details above, on, or beneath the surface of the Earth, to depict them in a usable form, or to establish the position of points or details. Our extensive team of drillers and support equipment enables us to provide a comprehensive range of field services, which include:

- ❖ Onshore & offshore Drilling, Coring and Sampling of Soils and Rock
- ❖ Cone Penetration Testing (CPT)
- ❖ UXO, ADCP, Siesmic, Bathymetric, Topographical surveys
- ❖ In situ Testing & Lab Testing
- ❖ Engineering Geophysics Survey
- ❖ Thermography Survey & Dynamic Gas Extraction Tests



## Topographic Survey

This type of survey maps the boundaries, manmade and natural features, and levels of a site and is the first step in the process of the site's development. Other constraining factors, such as highways and buildings adjacent to the site, are also surveyed to aid the design process. A professionally produced topographical survey can be used as a legal document to define the boundaries of a property.

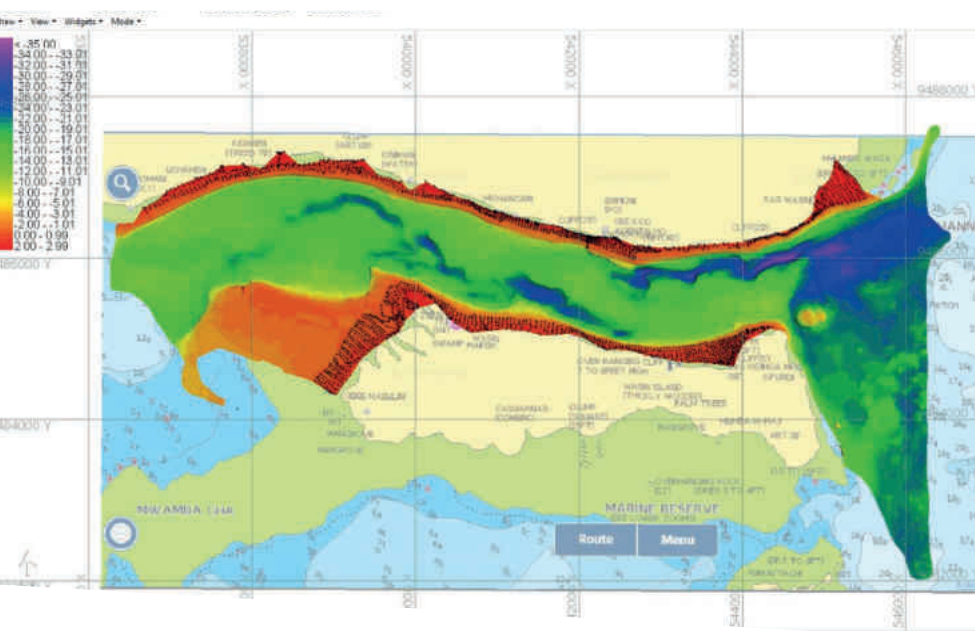
Other professionals, such as architects, civil engineers, and planners, use them to make decisions on design and project management.





## Geotechnical Survey

Required to determine the nature of the ground conditions and aid with the design of foundations, drainage systems, and/or outline designs. The scale of developments that may require a geotechnical investigation can range from domestic extensions to large-scale commercial premises on brownfield or greenfield land. Such investigations are designed to assess both the environmental and geotechnical ground conditions within one combined investigation, providing a more efficient and cost-effective approach. Our geo-environmental investigations enable the early identification of potential constraints posed by the condition of the ground and, if required, an indication of engineering solutions.

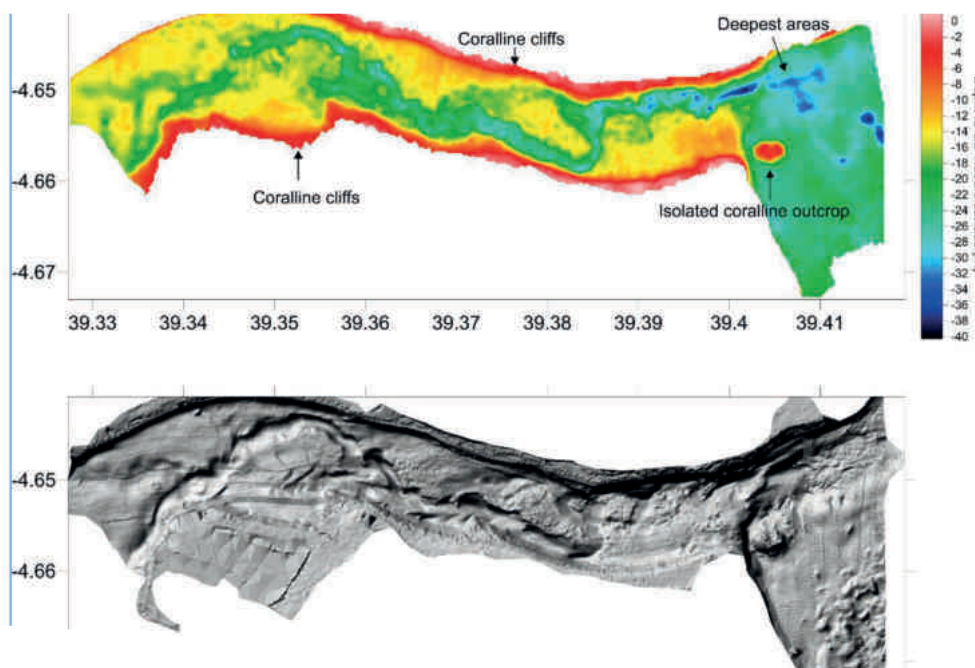


## Bathymetric Survey

This allow us to measure the depth of a water body as well as map its underwater features. Data collected for a variety of water bodies, including rivers, lakes, and estuaries, can be used to inform project developments.

Bathymetric surveys are conducted using an echosounder attached to a survey boat. As the boat moves across the water, the echo sounder will generate signals.

These are then converted into soundwaves by an underwater transducer.



## Seismic Survey

Aims at measuring the earth's properties by means of physical principles such as magnetic, electric, gravitational, thermal, and elastic theories. It is based on the theory of elasticity and therefore tries to deduce the elastic properties of materials by measuring their response to elastic disturbances called seismic (or elastic) waves. There are three major types of seismic surveys: refraction, reflection, and surface waves, depending on the specific type of waves being utilized. Each type of seismic survey utilizes a specific type of wave (for example, reflected waves for reflection surveys) and its specific arrival pattern on a multichannel record.



# Onshore & Offshore Piling

---

## ■ Your Piling People

We provide the design and execution of piling works in East Africa for infrastructure projects, transportation engineering, marine engineering, the oil and gas sector, and power and transmission projects. Our extensive specialized drilling and driven equipment and well-experienced fleet enable us to undertake all types of pile foundation solutions, shoring systems onshore and offshore, pile testing, and rental options for your projects.

## Piling Services

- **Bored Cast-in-Situ piles (BCIS)**
- **Driven Cast-in-Situ Piles (DCIS)**
- **Steel Piles**
- **Mini / Micro Piles**
- **Under Reamed Piles**
- **Shoring System**
- **Ground Anchors**
- **Sheet Piles**

## Pile Testing Services

- **Static Load Test (SLT)**
- **Pile Integrity Test (PIT)**
- **High Strain Dynamic Test (HSDT)**
- **Tension / Pull-Out test**
- **Lateral Test**
- **Cross Hole Sonic Logging Test**
- **Caliper Logging Test**







# Marine Construction

■ The offshore industry is constantly evolving, and we're evolving with it.

SECO has the experience in delivering a variety of marine infrastructure projects, including wharves, jetties, bridges, navigational aids, walkways, sea walls, slipways, coffer dams, gabion walls, offshore pipe trestles, etc.

Our marine construction services bring a strategic approach to meeting the requirements of customers in both the public and private sectors. Our operations are supported by a capable fleet of assets that encompasses not only tugs and barges but also associated auxiliary

equipment such as anchor systems, hydraulic packs, etc. Easy accessibility to equipment offers us an advantage in mobilizing quickly; it also provides more opportunities to swiftly contrive more efficient solutions in the field.

As a service provider, our objective is to improve the management of schedules and budgets through results-driven self-performance.

Our experienced, knowledgeable crew works safely and efficiently to provide high-quality services to our customers.

## Expertise:

- Ports
- Harbors
- Jetties
- Bridges
- Sea Walls
- Shore Protection



Construction of Dongo Kundu Bypass, Mombasa, Kenya

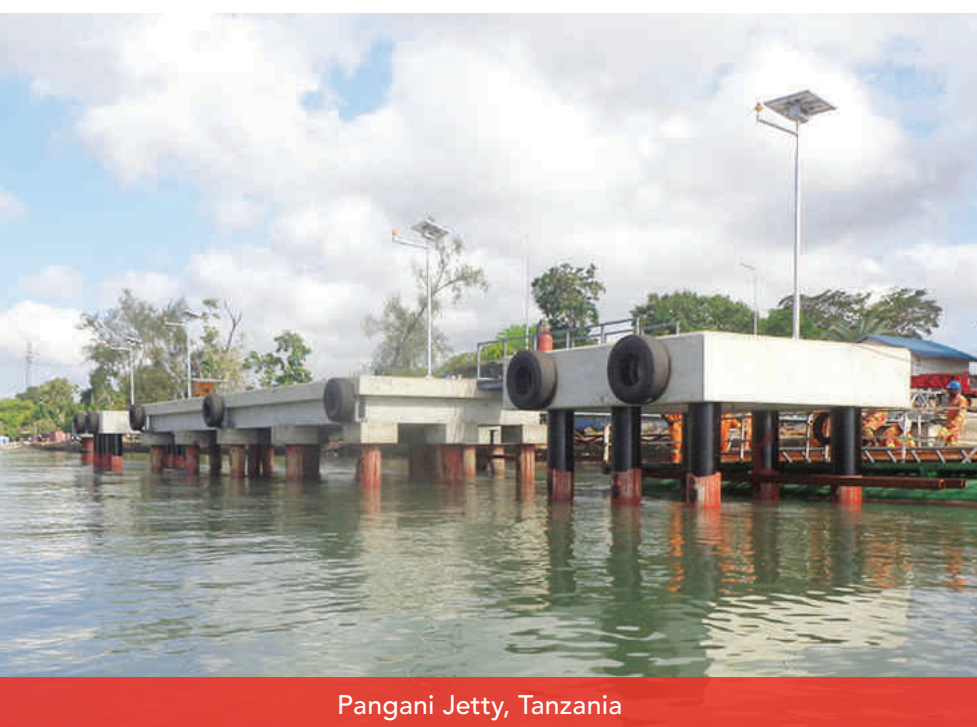




Dongo Kundu Bypass - Mteza, Mombasa



Nyamisati Jetty, Tanzania



Pangani Jetty, Tanzania





# Engineering / Design, Procurement & Construction Contractor (EPC)

■ As a project owner, if you could harness all the benefits of design-build and receive certain guarantees about the process and performance of your new infrastructure, would you do it? Enter engineering, procurement, and construction (EPC), a turnkey model that's gaining momentum as a preferred project delivery method.

## Expertise

Our EPC services identify and create efficiencies through turnkey solutions.

As the single point of responsibility for your most complex projects, SECO's expertise and project management skills allow us to blend contractor efficiencies with owner's preferences.

In these turnkey projects, we are responsible for project execution and coordinating all aspects of the project, relieving you of the day-to-day details.

We will provide you with a completed project that meets your expectations.

## EPC Services Include:

- **Planning**
- **Preliminary engineering**
- **Pre-construction**
- **Detailed design**
- **Procurement**
- **Construction management**
- **Start-up & commissioning**
- **Qualification & validation**



Alpha Business Park, along the Eastern bypass, Nairobi, Kenya

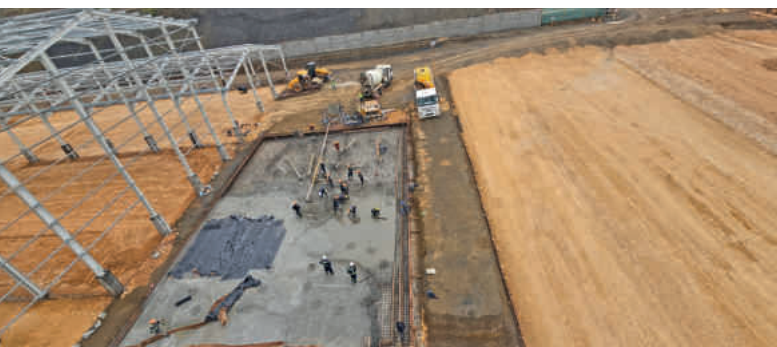




Lake Turkana Wind Power Village, Marsabit, Kenya



Alpha Logistics Park, Mombasa, Kenya



Bonje Agri-Hub, Mombasa, Kenya - Under Construction





250 Ton Crawler Crane

# Heavy Lifting Solutions

## ■ Combining Engineering with High-Capacity Cranes

The SECO Heavy Lifting Division lies at the heart of what we do and gives you the benefit of working with the most experienced, knowledgeable, and trusted team in the region. Only with this understanding have we been able to provide services to help, support, and strengthen you. Our services are designed to optimize your working process, lift your business, and bring you a great day at work. We offer services related directly to our equipment as

well as certain onsite services. For many regional companies, SECO is the preferred lifting partner in delivering their demanding projects on time and on budget. We're adept at carrying the weight of expectations on major projects, having worked with the biggest names around. We provide the know-how needed to make sure multiple lifts and round-the-clock jobs run smoothly.

SECO is keen to maintain a high level of health, safety, and environmental (HSE) matters. Customers renting from SECO will be assured that machines have

been checked to meet high demands on quality, safety, and the environment.

## Services

- **Lifting Plan Design**
- **Complex Lifting Projects**
- **Tandem Lifts**
- **Load Testing**
- **Spreaders and Cradles**





## ■ Contract Lift Projects

This all-encompassing service effectively places responsibility for the entire lift process in SECO's hands. In addition to the crane you need for a specific task, you will benefit from a range of additional services, including lift design, risk assessment, method statement provision, health, safety, and environmental (QHSE) analysis, road closure management, and any other aspects of the lift you need us to manage.

This all means you can be sure that lift parameters are fully compliant with current regulations and standards. This is the ideal option for those who want to ensure every part of planning

and execution is delivered to the highest levels and use a trusted partner to take on full liability.

## Complexity

SECO is the safe choice for handling the pressures of multiple lifts on large scales in the East African region.

Our fleet of heavy haulage trucks from our sister company, Alpha Logistics, supports our mobile cranes by transporting additional crane sections and lifting equipment to wherever they are needed.







# Containerized Solutions

## Container Conversions

Containers are strong, secure, and modular, making them the perfect solution for just about any instant space requirement. They can be modified and converted into virtually any space, and their durability allows for these spaces to be moved and positioned to form individual or multiple container structures. They are not only suited to rapid delivery due to their modular nature but are also perfect for remote camps as a “plug and play” solution for everything from office and accommodation requirements to

medical facilities and training rooms

## Tailored Solutions

- Modular “Plug & Play” solutions including offices, accommodation, medical facilities and training rooms.
- Regional reach with multiple offices and production facilities in East Africa
- Tailored conversions are done by a team of in-house engineers and design experts
- Turnkey solution from idea

inception to site mobilisation

## We Add Value To Your Projects With Our:

- Extensive product knowledge of containers and ancillary equipment
- Design experience with structural assessment and 3D Computer Aided Design modelling
- Thorough project investigation to ensure suitable specifications
- High quality workmanship and customer service





## ■ Bespoke Conversions

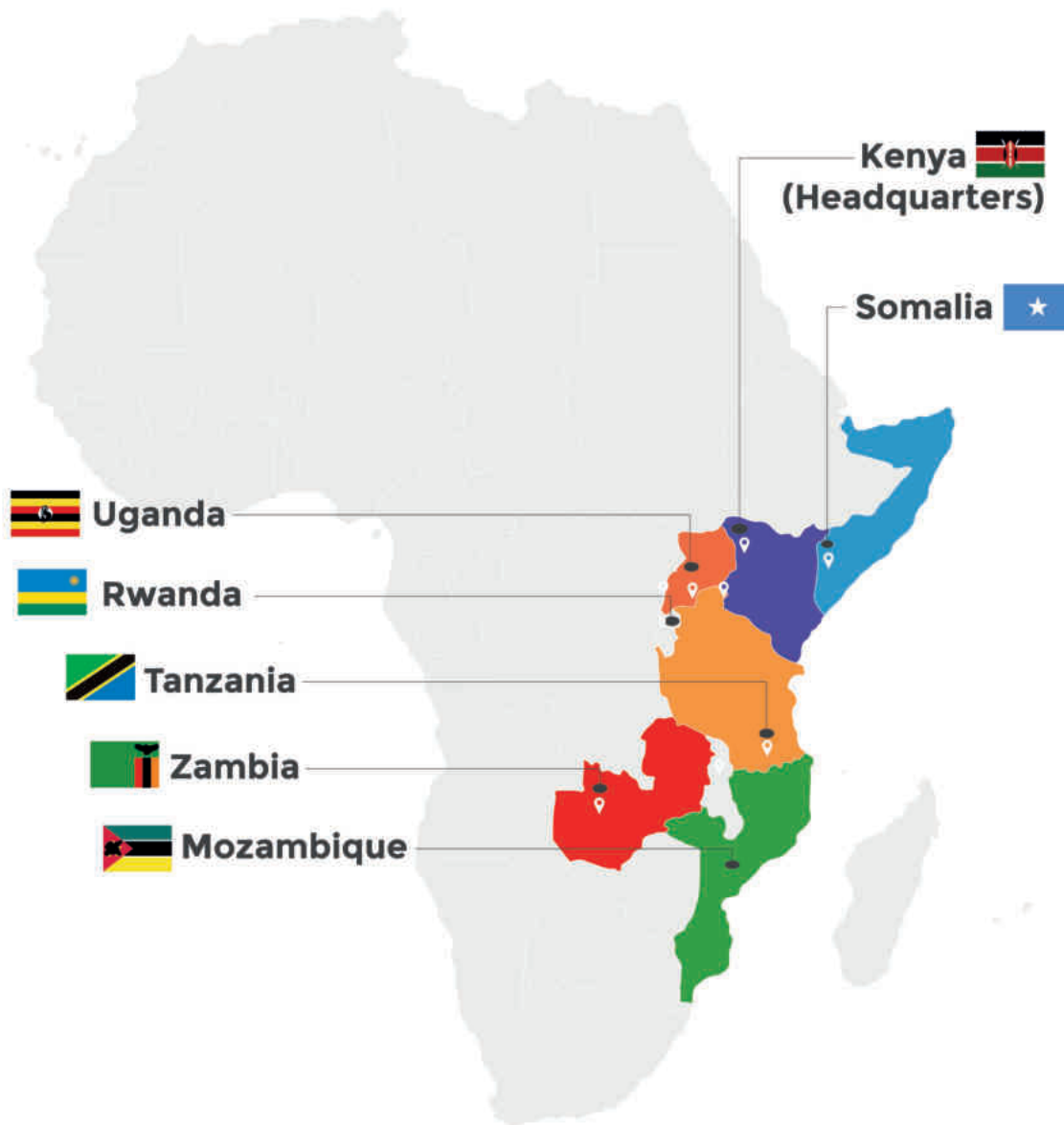
Produced in the millions, shipping containers are built and designed to carry 30 tons of cargo while stacked nine high on a ship pitching and rolling at sea. This integral strength, coupled with the fact that they are mass produced, means they can be affordably converted to a variety of uses and can provide a solution to various space and storage problems.

Each shipping container application is unique, and therefore we understand that you may have unique requirements, from extra windows and doors to paint and flooring. Simple and hassle-free, these options can be added to any of our standard floorplans. We can also alter the height and length as required.

## Our Solutions

- **Medical Structures**
- **Accommodation units**
- **Office spaces**
- **Ablution blocks**
- **Workshops**
- **Laundry units**
- **Laboratory units**
- **Storage units**
- **Kitchen units**
- **Dining units**
- **Canteens**
- **Multi-span structures**
- **Pop-up stores**
- **Mixed-used units**





**Kenya**   
(Headquarters)

**Somalia** 

**Uganda** 

**Rwanda** 

**Tanzania** 

**Zambia** 

**Mozambique** 

## Kenya

**Southern Engineering Co. Ltd  
(SECO)**

### Mombasa - Head & Sales Office

Mbaraki Wharf near Likoni Ferry

P.O BOX 84162 - 80100, Mombasa

Tel: +254 722 203 156

Tel: +254 733 203 156

Email: seco@alphakenya.com

### Nairobi

Alpha Business Park, along the  
Eastern By-pass

Tel: +254 722 203 156

Tel: +254 733 203 156

Email: seco@alphakenya.com

[www.secoafrika.com](http://www.secoafrika.com)

[www.alphaafrica.com](http://www.alphaafrica.com)

## Tanzania

### Dar es Salaam

Ali Hassan Mwinyi Road,  
Plot 40, Block 72

P.O. BOX 8316, Dar es Salaam

Tel: +255 788 862 204

Tel: +255 22 212 8828 / 54

Email: seco@alphakenya.com

## Mozambique

**Southern Engineering Company  
Mozambique, LDA**

### Pemba

Zona Do Aeroporto, Avenida 25 de  
Setembro, No .2713, Bairro Alto  
Gingone, Cidade De Pemba,  
Provincia De Cabo Delgado

Tel: +258 27 220 609

Email: seco@alphakenya.com

## Uganda

**SECO Marine (U) Ltd - Free Zone  
Company**

### Kampala - Corporate Office

Plot 10 Kiwana Road, Bukoto

P.O BOX 27929, Kampala

### Entebbe - Shipyard

Plot 14, Airport Road, Fishways Close

Tel: +256 393 261 046 / 7

Email: seco@ug.secoafrika.com



Part of

