



LOGISTICS & ENGINEERING SUPPORT SERVICES



An ISO 9001:2015 Certified Company.

BEYOND LOGISTICS

LEADERS IN
ONSHORE AND OFFSHORE
LOGISTICS ACROSS EAST AFRICA

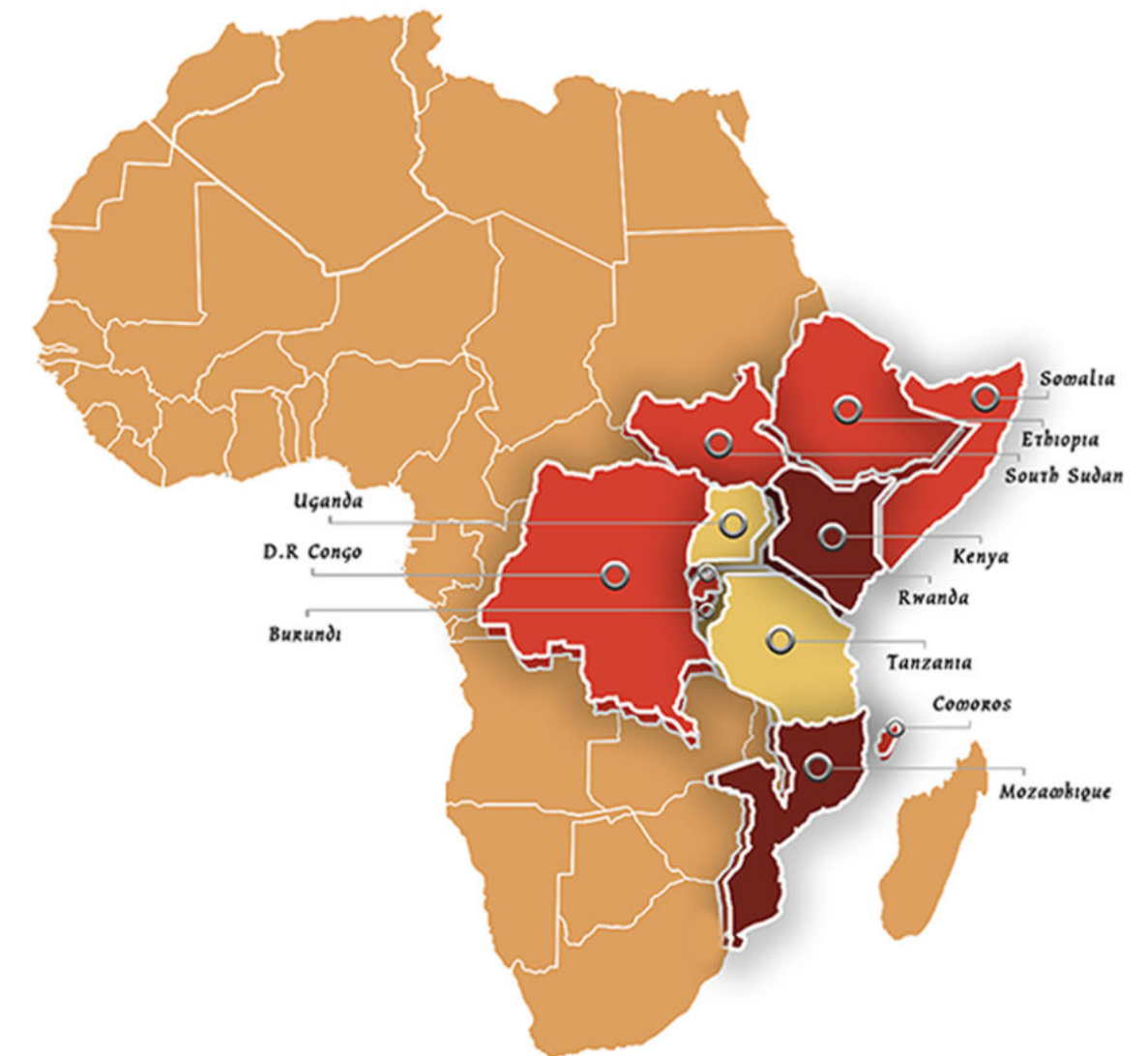


ABOUT ALSL

Working throughout the Eastern and Southern coasts of Africa, Alpha Logistics Services (EPZ) Ltd (ALSL) has an extensive fleet of vessels and plant equipment to meet the high standards and levels of requirements of its regional and global clientele base.

For the past 10 years, Alpha Logistics has been servicing the needs of various oil and gas exploration companies as well as those of infrastructure building industries operating in Kenya, Tanzania, Uganda, Mozambique and Somalia.

ALSL has a vast array of experience in numerous offshore engineering projects extending from hydrographic survey works, pipe laying, electric cable laying, pipeline stabilization and mattress laying to ample experience in a range of dredging projects.



To meet the needs of the increasing interest in infrastructure development as well as in offshore areas of East and Southern Africa, ALSL is able to offer sound expertise, proven experience and project management skills to carry out turnkey projects. We are well equipped with multi-purpose vessels and equipment to undertake a large range of offshore engineering works.



PRIVATE PORT FACILITY

ALSL base in Mombasa is equipped with:

- ▶ 80 meter jetty with 12 meter draft dedicated for Offshore Support Vessels (OSV) and break bulk
- ▶ 23 meter jetty with 11 meter draft for supporting vessels/anchorage for second Platform Support Vessels (PSV)
- ▶ 133 meter jetty with 10 meter draft, shared jetty with other commercial vessels
- ▶ 10,000 sq. meter lay down/operation area near jetty
- ▶ 20,000 sq. meter area in proximity to key side – with Export Processing Zone (EPZ) facility
- ▶ 3,000 sq. meter covered space
- ▶ 110m launching slipway
- ▶ 160,000 sq. meters on Mombasa-Nairobi highway, with a full fledged waste management facility and a holding facility for casings



CHARTERING OF MARINE EQUIPMENT



FLAT TOP BARGE WITH SIDE WALL AND RAMP

ALSL offers a large fleet of offshore tugs, barges, ROLO/RORO ships, dredgers and other utility craft, chartering and hiring on both long term and short term basis. The company provides marine logistics services across East and Southern Africa on projects including cargo movements, seismic surveys, underwater works as well as dredging operations.

For offshore projects we have marine gear such as winches, 6-8 point mooring systems, compressors and diving equipment.



ALPHAHEK 1 - MODULAR JACKUP BARGE



ALPHA TRION - JACKUP BARGE



ALPHA GRANADA - TUG



TOWING AND SALVAGE

ALSL has been operational in East African waters for more than 10 years providing salvage and towing services in both shallow and deep waters to a range of large vessels and small craft.



ALPHA GRANADA TOWING DREDGER



PROJECT SUPPORT CARGO MOVEMENT

The company tugs carry a range of salvage specialized equipment including salvage pumps, submersible pumps, generators and welding, cutting, patching, firefighting and diving equipment. Our vessel crew is supported by a team of highly trained salvage professionals.



SALVAGE OF THERESA ARCTIC

PILING



ALPHAHEK Ltd, a joint venture company between Alpha Logistics Services (EPZ) Ltd and Van't Hek International, is a versatile foundation company in East Africa specialized in all types of pile foundation works. We provide shoring works using Hydraulic Rotary Piling Rig (20 ton Torque), Hydraulic Crawler Crane, Jack up, Barges, Skid Mounted Diamond Core Drilling Machine and Hydraulic Hammer.



PILING WORKS - MOMBASA, KENYA

ALPHAHEK offers a complete range of foundation services & techniques carrying out various Geotechnical Investigation, bored cast in-situ piles, driven piles, sheet piles for onshore & offshore projects. Our quality service offering cuts across the onshore & offshore civil engineering discipline in which besides surveys, we carry out shoring works, contiguous pile wall, secant pile wall & sheet piling.

Our geostucture engineering goes deeper to projects like breakwater works, marina construction, bored cast in situ piles, driven tubular & precast piles in consideration to project specific requirements.



ENGLISH POINT MARINA



PANGANI JETTY - TANZANIA



SECO JETTY - MOMBASA



PILING WORKS - KISUMU OIL JETTY, KENYA

Our Core expertise:-

Bored Cast In Situ Piles

Bored Piles are non-displacement piles capable of carrying large vertical loads and are particularly efficient and effective when boring into cohesive soils. Used in foundations of industrial complexes, bridges and flyovers.

Sheet Piles - Cofferdams (Temporary & Permanent)

Retaining system comprising of overlapping sections of uniform steel sheeting. Used for the construction of retaining walls, temporary shoring, cofferdams, docks, jetties, bridge abutments, flood & ocean protection, cut-off walls & more.

Driven Piles - Steel Tubular Piles

Driven Piles are of various shape make and sizes, these consist precast concrete, round steel casings, tubular steel casings, steel H sections, composite piles and timber piles. Used in a variety of soil conditions.

Driven Pre-cast Piles

Driven Piles are of various shape make and sizes, these consist precast concrete, round steel casings, tubular steel casings, steel H sections, composite piles and timber piles. Used in a variety of soil conditions.

Soldier Piles and Lagging

Soldier piles and lagging retains soil, using vertical steel piles with horizontal lagging. Whether an open or low head-room site, SECO has the equipment and experience to design and construct the optimal solution. Supports excavations.

Ductile Iron Piles

Ductile Iron Piles are often used as an alternative to drilled micropiles, driven H-piles or steel pipe piles, helical piles and augercast piles to save foundation costs and accelerate project schedules.

Sand Compaction Piles

Sand compaction piles are one of the potential methods for improving ground stability, preventing liquefaction, reducing settlement and similar applications. This method involves driving a hollow steel pipe into the ground.

Mini Piling

Mini Piling is a low vibration restricted access system. Ideally suited for small extensions or refurbishment work.

King Piles

Contiguous/Secant Pile Wall pile techniques are very similar in concept with bored piles however can be completed by bored pile method or continuous flight auger method.

Micro Piles

They can be installed in soil, rock, cobbles and boulders, through man-made obstructions or in areas with high water tables to depths in excess of 60 metres (200 ft.)



HYDROGRAPHIC AND GEOTECHNICAL INVESTIGATIONS



BATHYMETRIC SURVEY AT KENYA PORTS AUTHORITY (KPA), - MOMBASA

Hydrographic and geotechnical investigation work is undertaken for marine works such as jetty and breakwater construction, gabion walls, marine piling, dredging and load testing which include: static load testing, tension load testing, lateral load testing, integrity testing, sonic logging, caliper logging and dynamic load testing.

The company is well equipped with coring and piling machines with jack ups to undertake investigation work for both onshore and offshore sites including for those where soil investigation is required.

Our services include:

- Onshore & Offshore Geotechnical Investigation - sampling, Lab testing, SPT, DPT, DCP & Vane test
- Piezometers installation and monitoring
- CPTu
- Ground water investigations
- Dam safety studies (saturation determination in dam body)

ALSL provides sound and effective solutions for hydrographic surveys, bathymetry, as well as for seismic and geotechnical works.



OFFSHORE ENGINEERING

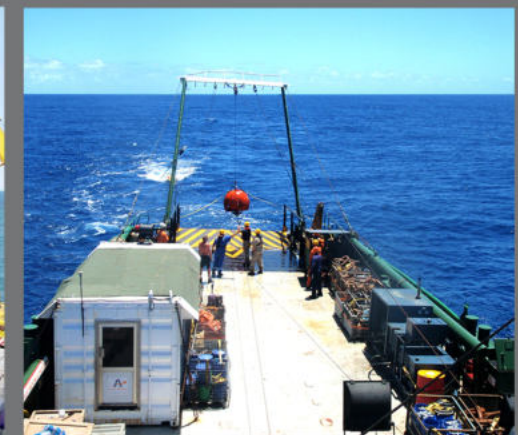


FIBRE OPTIC CABLE LAYING ZANZIBAR TO DAR ES SALAAM

ALSL has expertise in the construction of pier facilities, marine structural works, land reclamation, piling, provision of overall marine engineering support, marine maintenance and technical support, rehabilitation of certified tools and equipment, special rig fabrications works, marine training, marine structures and foundations, marine oil terminals, oil head operation, marine site improvement, refineries and storage facilities, as well as in geotechnical and geophysical soil investigations.



Our offshore team is complemented with a specialized fleet of vessels and the required equipment to undertake offshore engineering works.





PROJECT SUPPORT & LOGISTICS

ALSL provides global freight forwarding services for project cargo. We specialize in heavy-lift and out-of-gauge cargo movement for infrastructure development projects, oil and gas projects, and marine services.





MULTI-MODAL TRANSPORT

No matter what the cargo or trade route, we always offer the best shipping solution.



ALS is well equipped to meet the growing demand for multi-modal transportation that exceed traditional expectations. We offer value added services with a specific focus on customer needs and unmatched communications.

Focused on minimizing costs, we customize logistic itineraries and save time for your delivery by closely monitoring and coordinating all the activities involved in the process.

ALS aims to provide best-in-class services and stand as a reputable, reliable and consistent partner of choice by monitoring upcoming and potential changes to legislation and industry requirements to ensure our client's interests are protected at all times.

Over the years ALS has built an enviable reputation on the foundations of its customer service record. Consequently, our client base now covers the import and export of a wide range of commodities, goods and products using a variety of equipment and vessel options.

This ensures that, no matter what the cargo or trade route, we can always offer the best shipping solution to the majority of East and Southern African as well as to Middle East freight destinations.

ALS provides full customs clearance services for both importers and exporters covering goods shipped by road, sea or air. Our dedicated customs clearance team understands both the complexities of customs clearance and the necessity to make the process as smooth as possible for our customers.

RIG MOVE OPERATIONS (OFFSHORE AND ONSHORE)



Our main focus is to operate safely, efficiently, and with complete regulatory compliance.

ALSL specializes in organizing the logistics and equipment for timely rig move operations within Eastern and Southern Africa. In recognizing that rig mobilization is one of the most expensive and dangerous parts of the drilling process, we assist all our clients in managing this risk and cost. Our main focus is to operate safely, efficiently, and with complete regulatory compliance.

This is accomplished by utilizing well experienced, highly qualified personnel as well as premier, well maintained equipment in the industry including a fleet of tugs, cranes, trucks, forklifts and slings. We undertake safe and well organized rig move operations onshore and offshore (from ship to shore) across East Africa.



PARAGON RIG MOVE - SONGO SONGO

PROVISION OF SPECIALIZED MANPOWER

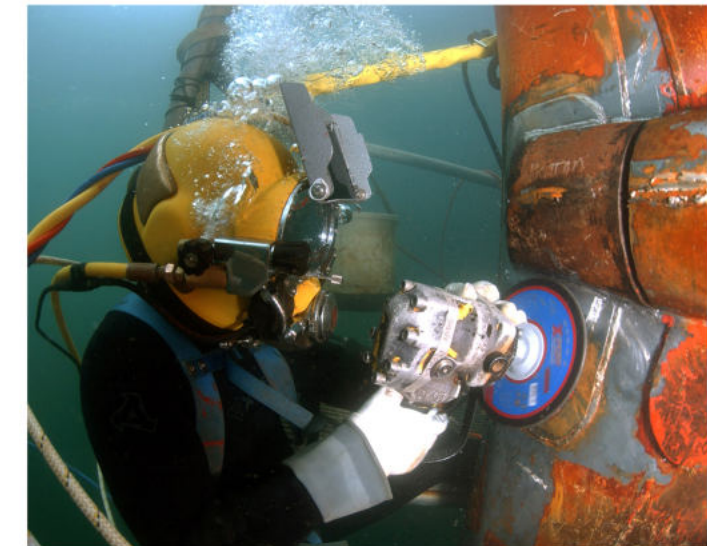
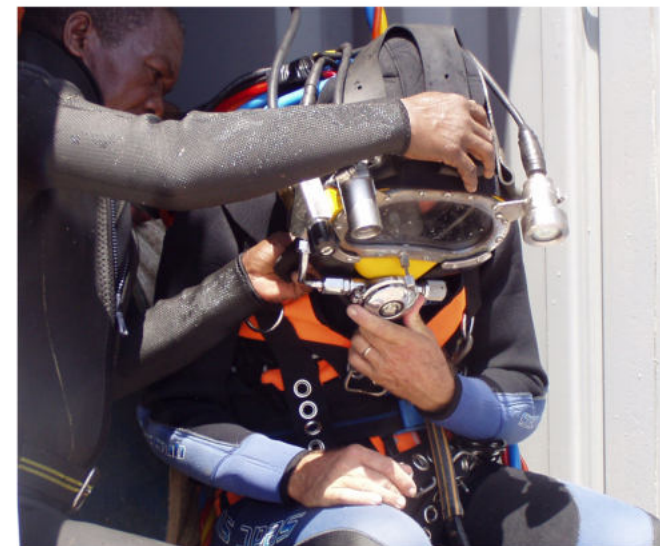
ALSL provides professional and specialized manpower services to major companies across East Africa ranging from project and construction managers to marine superintendents, tug masters and barge masters.

In addition, we provide highly skilled and semi-skilled manpower for plant shutdown and turnaround works, plant maintenance works, support services for plant construction works, dry docking, machinery workshops, fabrication shops, and container works.

Moreover, available manpower services also include qualified pipe and plate welders, fabricators, qualified crane and forklift operators, qualified banks men and riggers, qualified fitters and electricians, painters, carpenters and plumbers.



UNDERWATER WORKS & COMMERCIAL DIVING



Our well-equipped and experienced team of divers plan and execute operations and activities which include underwater inspections, rock beam installations, mattress laying, pipe laying, electric cable laying, underwater engineering works, video photography as well as commercial diving training and support.

This well experienced team has the capability, skill and knowledge to carry out underwater works - even in hazardous environments.



VESSEL MANAGEMENT

ALSL owns, charters and operates a fleet of barges, tugs and vessels of various sizes and capacities to enable the movement of cargo by sea throughout Eastern and Southern Africa as well as the Middle East.



RO-RO (BALASTABLE) BARGE



TUGS



MODULAR JACK-UP



LANDING CRAFT



JACK UP BARGE



FEEDER VESSELS

* General arrangement and detailed specifications available upon request or visit www.alphalogisticsafrica.com/vessels



FEEDER SERVICE SOLUTIONS



FEEDER SERVICE FROM MOMBASA TO MOCIMBOA DA PRAIA - ALPHA KIRAWIRA

Over the past decade, we have built up a solid presence in markets across East Central and South Africa. This regional reach makes us the forwarding partner of choice for multinational companies, seeking a simplified, consistent and quality logistics services capability for their global operations.



In line with the highest international industry standard for Marine Logistics all our Vessels and our company are fully compliant with MARPOL regulations, ISM, IMO, SOLAS (safety of life at sea) conventions, ISP compliant, ANTIPIRACY crew training and BMP 4 fully conversant.



PETRA I



PETRA II



ALPHA TRANSPORTER

Innovative solutions provision



► Freight to Djibouti, Berbera and Bosaso on inducement.

We have been operating a regular service since 2009 calling Port of Mogadishu and Kismayo with sailings every fortnight.

Alpha Logistics is committed to granting a tailored and flexible Vessel Operation service aimed to meet the principal requirements with efficient, professional, timely and cost efficient holistic solutions with delivery to new remote locations such as Barawe, Cadale, Koday, Merca in Somalia and Mocimboa da Praia in Mozambique.

Cargo includes:

- Dry and reefer containers
- Military vehicles
- Heavy RO-RO equipment
- Loose cargo requiring special handling
- Transit cargo
- Transshipment cargo

Yearly Cargo Movement 2014 - 2017

- 9,589 TEUS moved
- 30,869.44 CBM RO-RO and bulk cargo

Supporting Infrastructure Development in North Mozambique

Subtech Mozambique, Alpha Logistics and LBH Mozambique created an alliance to enhance their suite of services in Mozambique to be able to offer a holistic logistics and services solution starting specifically with activities in and around the small but strategically located port of Mocimboa da Praia.

All three of the companies in the ALS Alliance have a long history in Mozambique operations and have been involved in or had some input in almost every capital infrastructure related project in Mozambique



BEACHING IN MOCIMBOA DA PRAIA



ENHANCING LOGISTICS INFRASTRUCTURE IN EAST AFRICA

ALSL's increased investment on logistics service provision aims at strengthening of infrastructure for improving the logistics performance of our clients in East Africa.

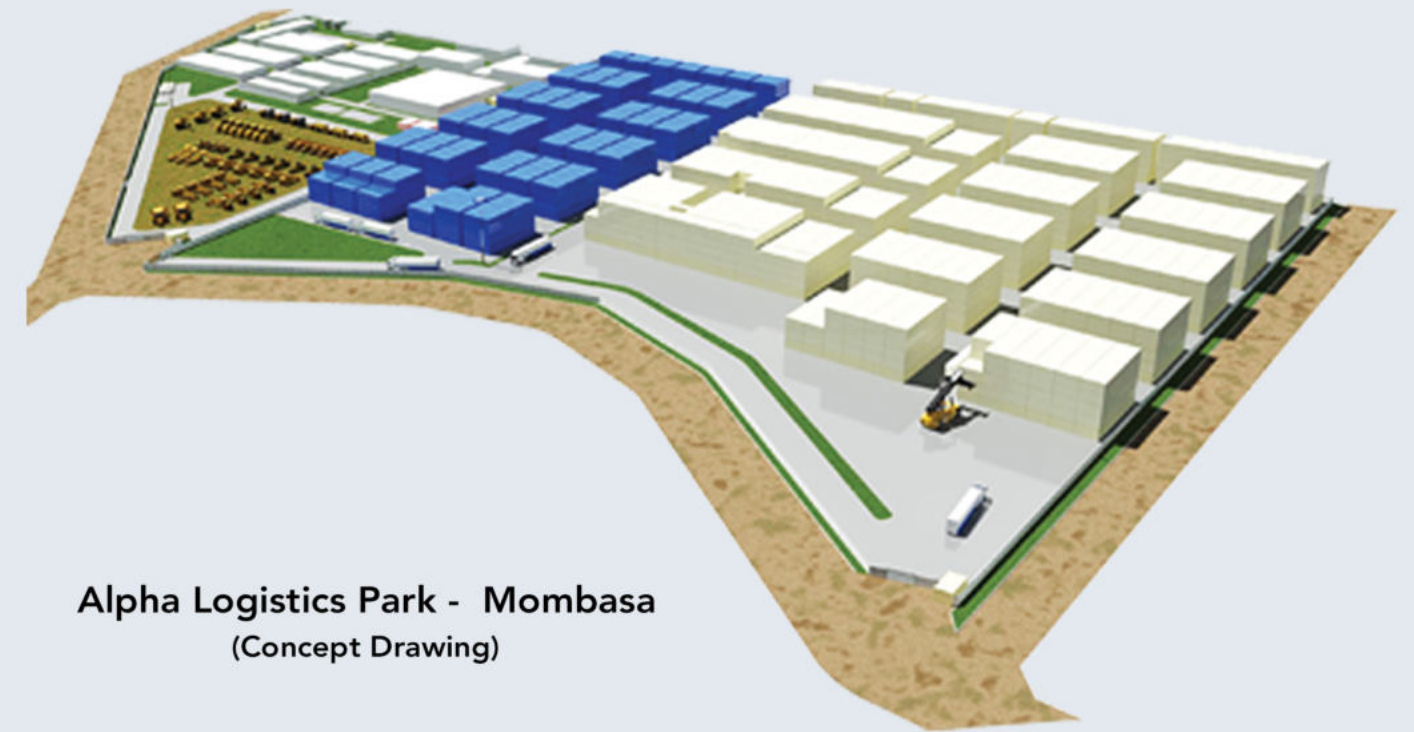
Our state of the art facility in Nairobi, Alpha Business Park is located in Ruai along the Eastern Bypass. It occupies a 52,000 sq. meter plot. The property is most suitable for workshops, warehouses, open storage yards and office space.

The facility incorporates world-class refrigerated warehouse design and management technology, offering integrated cold chain services and encompassing multi-temperature refrigerated storage, warehouse and inventory management services, as well as transport and distribution solutions to meet varying customer requirements.



Alpha Logistics Park is a 99,500 sqm logistic site that is owned jointly Alpha Logistics Services (EPZ) Ltd and Southern Shipping Services Ltd. Strategically-located along the Mombasa – Nairobi Highway and less than 12.7 km from the Kilindini Port via the newly constructed Dongo - Kundu Bypass, the Logistics Park is suitable for multiple types of industrial or distribution development.

This location is perfect for distribution or storage companies due to its close proximity to the Port of Mombasa. Spaces are designed for further expansion.



Alpha Logistics Park - Mombasa (Concept Drawing)



NAIROBI

ALPHA BUSINESS PARK
Total Yard Area : 52,000 sqm

MOMBASA

MIRITINI I
Total Yard Area : 16,571 sqm
MIRITINI II
Total Yard Area : 7,363 sqm
ALPHA LOGISTICS PARK
Total Yard Area : 99,500 sqm

DAR ES SALAAM

ALPHA CHOICE
Total Warehouse Area : 1357 sqm
Total Pallet No: 1800

ENTEBBE

KARMIC FOODS
Total Warehouse Area : 681 sqm

KIGALI

ALPHA CHOICE
Total Warehouse Area : 816 sqm
Total Pallet No: 576

KENYA

TANZANIA

UGANDA

RWANDA

* Detailed facility specifications available on request



SUPPLY BASE SERVICES

ALSL provides a complete range of supply base services including storage yard and warehouse facilities, dangerous goods storage, engineering support and the provision of transport and lifting equipment in East Africa.



Our facility in Nairobi at Alpha Business Park, along the Eastern By-Pass, Ruai has a non-dedicated open area of 25,000 sq. meters for general and out of gauge cargo.



Our facility in Mombasa is an Export Processing Zone (EPZ) with a total area of 20,000 sq. meters including warehouse capacity. The facility has already been successfully used by major oil & gas exploration companies including Woodside Energy, Weatherford, Upstream Petroleum Services and others.



A similar 22 acre supply base facility is also available in Mtwara, Tanzania, near the Mtwara port, with a built-in warehouse and waste management facility. The facility has already been successfully used by major oil & gas exploration companies including BG, Petrobras and others.





QUALITY, HEALTH, SAFETY & ENVIRONMENT

Our concern for Quality, Health, Safety and the Environment (QHSE) is an integral part of ALSL's company policy. Our management systems ensure that our QHSE policy is continuously implemented in our daily business processes.

ESSENTIAL COMPONENTS

- ▶ Risk & Task Assessments
- ▶ Specific Job Instructions
- ▶ Communications and Inspections

We consistently emphasize our employees' awareness of QHSE standards through regulatory systems and procedures. These efforts are made through regular training of our employees as well as through continuous internal and external QHSE audits.



ALSL CSR

CORPORATE SOCIAL RESPONSIBILITY



CYCLING CHALLENGE IN COLLABORATION WITH MOMBASA TRIATHLON TRUST

ALSL believes that the local communities around which its business and projects are located are a vital part of the success of its endeavors.

We are committed to carrying out our corporate social responsibilities and endeavor to make contributions back to the local community to improve the quality of life and the environment of its residents by supporting new developments as well as ongoing initiatives.



● **ALSL HEADQUARTERS**
ALPHA LOGISTICS SERVICES (EPZ) LIMITED
KENYA (Mombasa)

Regional Offices

- ALPHA LOGISTICS TANZANIA
(Dar-es-Salaam & Mtwara Offices)
- ALPHA CHOICE MOZAMBIQUE, LDA
MOZAMBIQUE (Pemba & Nacala Offices)
- ALPHA BUSINESS PARK
KENYA (Nairobi)
- ALPHA MARINE LTD
UGANDA (Kampala)

Other Areas of Operation

- COMOROS
- SOUTH AFRICA (Durban)
- MADAGASCAR
- MAURITIUS
- SEYCHELLES



CONTACT US

Head Office

Mbaraki Wharf - Near Likoni Ferry,
P.O BOX 40268 - 80100,
Mombasa, Kenya.

Nairobi Office

West End Towers, 1st Floor, Tower B,
Muthangari Drive Off Waiyaki Way.
P.O BOX 40268 - 80100,
Mombasa, Kenya.

GSM: +254 733 203 156 / +254 722 203 156

marine@alphakenya.com

www.alphalogisticsafrica.com



www.alphalogisticsafrica.com

