



Alpha GROUP

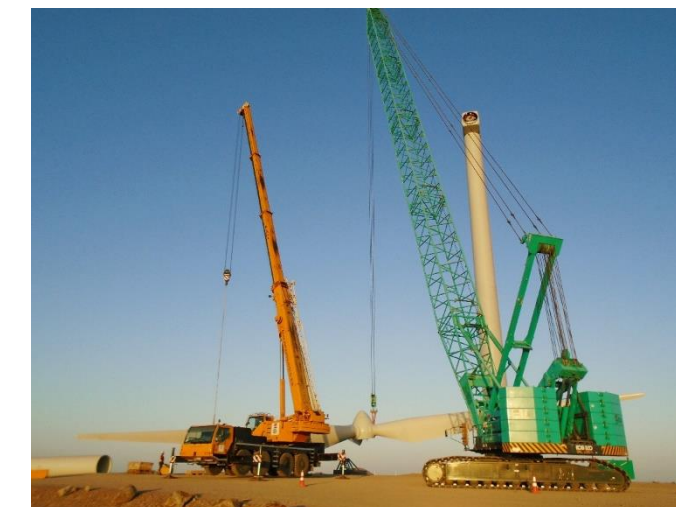


www.alphaseafoodafrica.com - www.alphaafrica.com

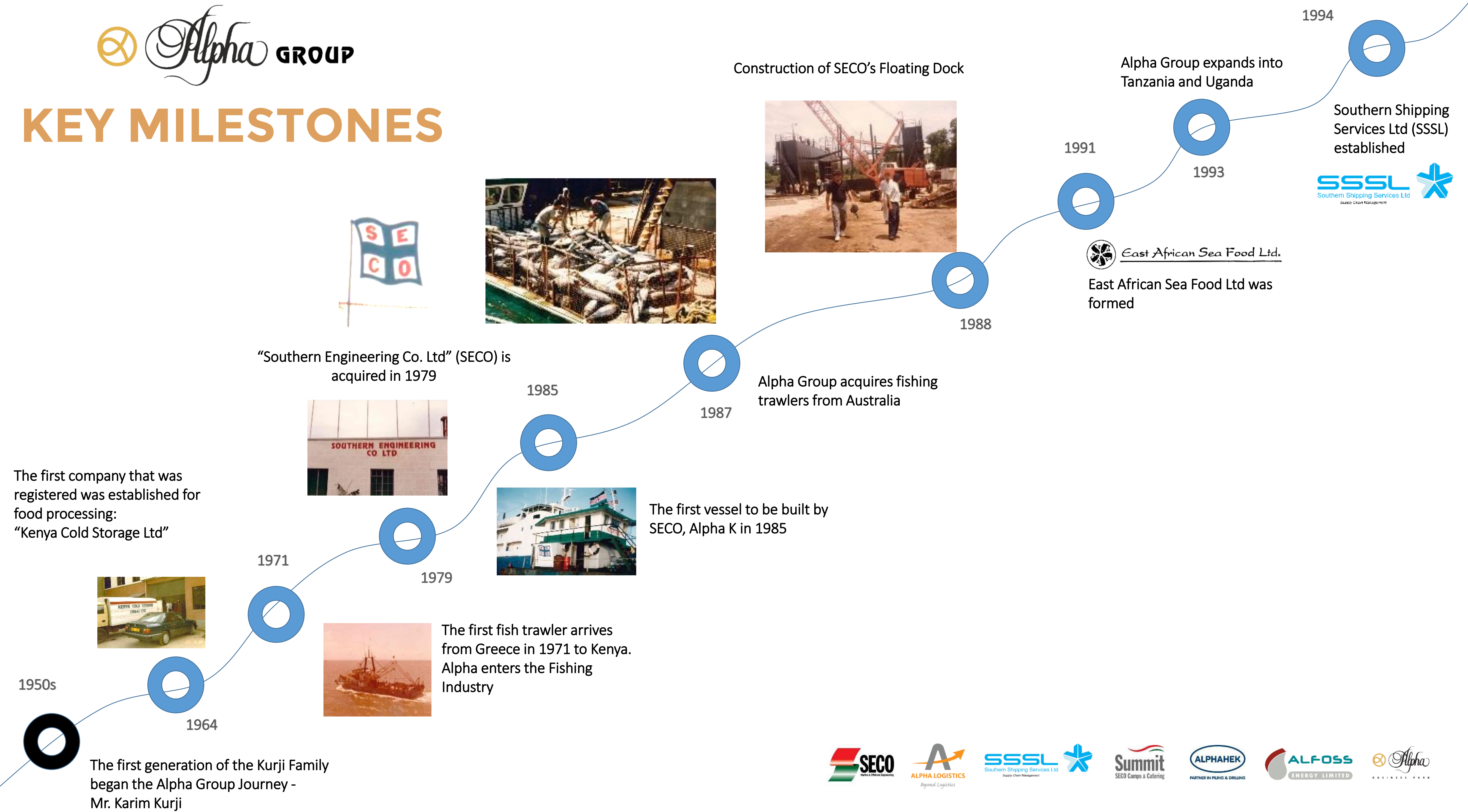
Food Division



Engineering, Logistics & Supply Chain Management Division



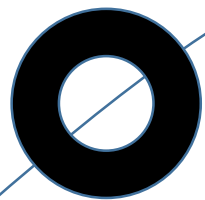
KEY MILESTONES



The first company that was registered was established for food processing: "Kenya Cold Storage Ltd"



1950s



The first generation of the Kurji Family began the Alpha Group Journey - Mr. Karim Kurji

1964

1971



The first fish trawler arrives from Greece in 1971 to Kenya. Alpha enters the Fishing Industry

1979



"Southern Engineering Co. Ltd" (SECO) is acquired in 1979



1985



The first vessel to be built by SECO, Alpha K in 1985

1987

Alpha Group acquires fishing trawlers from Australia



Construction of SECO's Floating Dock

1988



East African Sea Food Ltd.

East African Sea Food Ltd was formed

1991

Alpha Group expands into Tanzania and Uganda

1993

Southern Shipping Services Ltd (SSSL) established



1994



KEY MILESTONES

ALPHA LOGISTICS TZ LTD



Alpha Logistics Tanzania was formed marking the entry into the Oil & Gas Industry



Alpha group established its first relationship with the United Nations through Alpha Logistics and penetrates into Somalia



First major ship repair project for SECO in Uganda

2009

Alpha Kirawira, RORO vessel and Mussa K bunkering vessels were built for Alpha Logistics and Alfoss respectively by SECO



2012

1. Alpha Group starts working in Mozambique
2. SECO opens a new fully equipped fabrication workshop and new office building at its shipyard in Mombasa



2013



SECO is awarded the EPC contract for housing and associated social infrastructure in Turkana for the Lake Turkana Wind Power project

2014

2001



Alpha Logistics Kenya was formed providing marine logistics services with an EPZ licence

2004



The first offshore exploration in Kenya managed from SECO's base by Woodside Energy (Kenya) Ltd

2007

2008

KEY MILESTONES



Acquisition of Petra II (chartered to World Food Program), Alpha Stone Town, Alpha 3000, Alpha Mc Ginty



Construction and delivery of Research Boat- Umurage



Completion of Pangani Jetty in Tanzania



Completion of SECO Jetty Extension

2017



SECO executes a 210 accommodation contract in Mogadishu for the UN

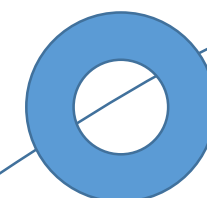


Alpha Logistics Services (EPZ) Ltd partnered with LBH and Subtech to create ALS Alliance. This Alliance is providing logistics services in the north of Mozambique in connection with the LNG Developments



Completion of the construction of Kisumu Oil Jetty by SECO

2018



2016

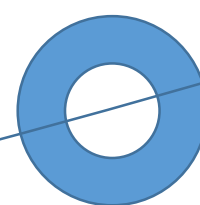


Alpha Group completed 8 month project to support Pan-African Energy drilling campaign.



A 'Grade A' integrated logistics facility built by SECO, strategically located on the Eastern By-pass, Nairobi. The park provides state-of-the-art cold storage services, office space, dry warehousing and sufficient lay-down area ensuring flexibility to the different needs of varying clients.

2015



Partnered with Anipsotiki for the erection of 365 wind turbines in the LTWP project



PARTNER IN PILING & DRILLING

Alpha group establishes a joint venture with Vanthek (Netherlands) forming "Alphahek" for piling and drilling projects



Alpha 2500 flat top barge, first IACS Class (IRS) unit built in Kenya



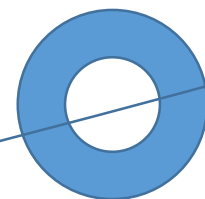
KEY MILESTONES



Summit - SECO Camps & Catering, completes Accommodation camp at Bonje, Mombasa and hands it over to FUJITA, the client



2019

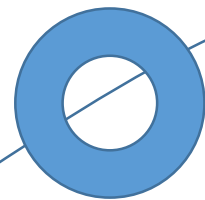


Towing and Salvage services by Alpha Logistics Services (EPZ) Ltd



Fabrication and Delivery of TBL Templates for Subtech Group in Mozambique by SECO

2019

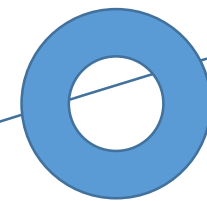


SECO Marine (U) Ltd is formed

Hapa Kazi Tu 01 and 02 completed and handed over to Tanzania Ports Authority (TPA)



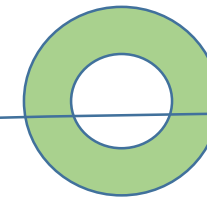
2020



ALPHAHEK & SECO Commences piling works at Mombasa Port area Road Development Project, Mombasa

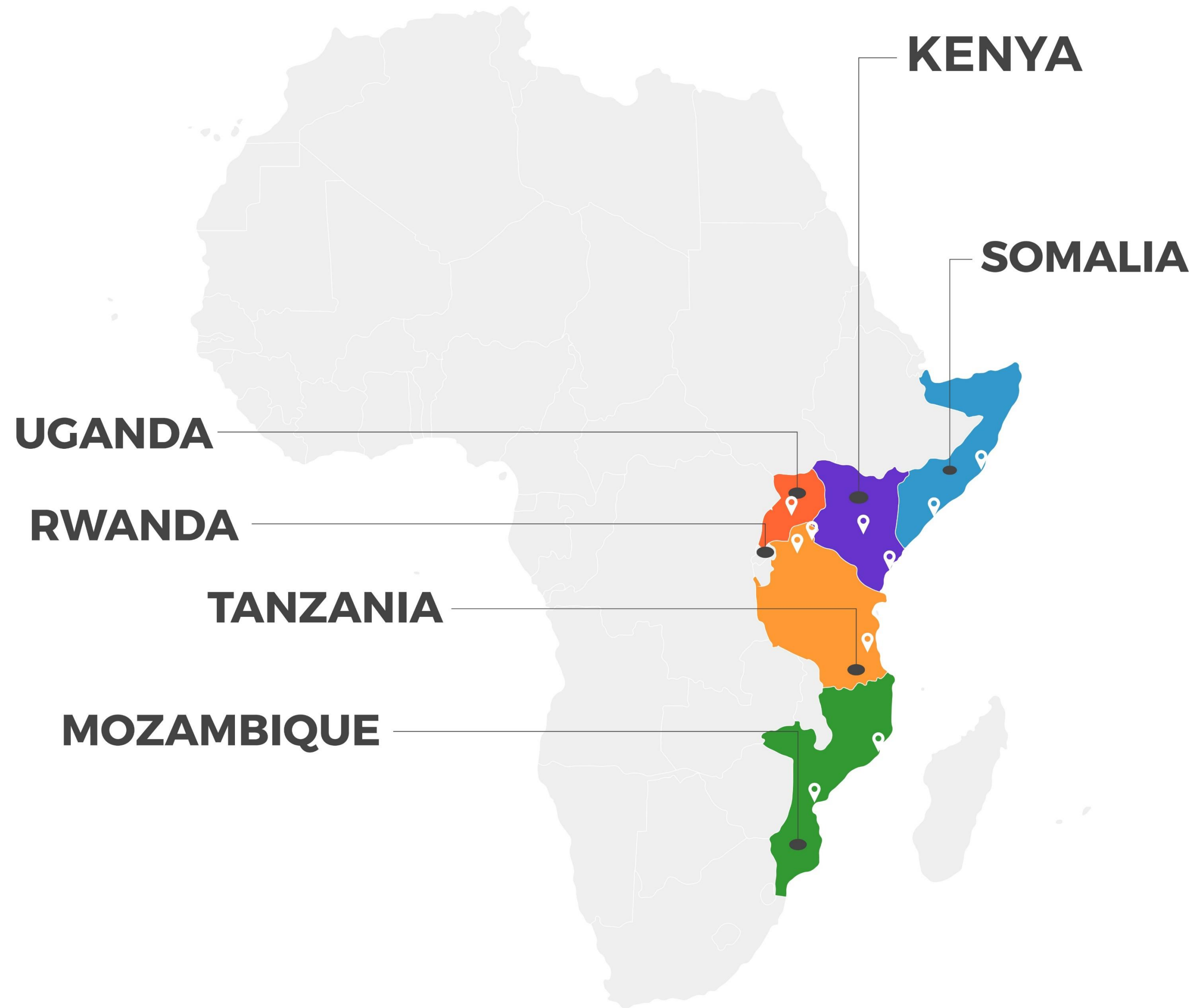


2021



ACM Commences the Construction of Alpha Village in the Gas city of Palma, Mozambique





ALPHA GROUP TODAY

- One of the leading Engineering, Logistics and Supply Chain Management conglomerate in sub-Saharan Africa with operations in 6 countries
- Kenya, Uganda, Tanzania, Rwanda, Somalia and Mozambique
- Alpha Group's over 6000 employees serve over 300 customers regionally/globally
- In addition to strong market position and brand, Alpha Group's key strength is its flexible business model and operational efficiency



Alpha GROUP

DAILY REGIONAL PRODUCTION CAPACITY

TANZANIA | • SEA & LAKE PRODUCTS PROCESSING & FREEZING CAPACITY: **200 TONS PER DAY**

UGANDA | • LAKE PRODUCTS PROCESSING & FREEZING CAPACITY: **45 TONS PER DAY**

KENYA | • SEA & LAKE PRODUCTS PROCESSING & FREEZING CAPACITY: **49 TONS PER DAY**

REGIONAL COLD STORAGE PALLET POSITIONS

TANZANIA | • DAR ES SALAAM: **1,800**

UGANDA | • ENTEBBE: **1,000**

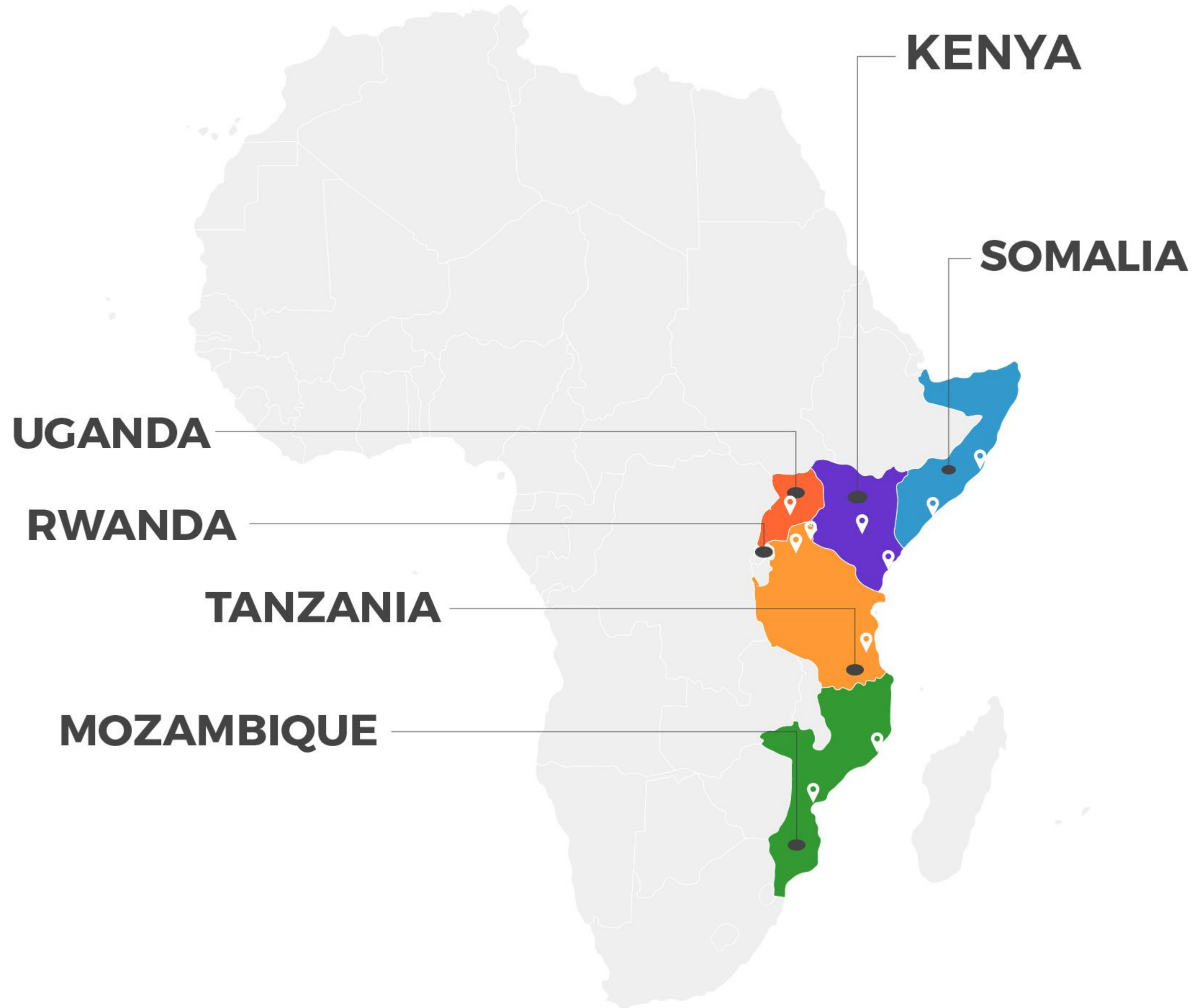
KENYA | • MOMBASA: **6,000**

• NAIROBI: **11,000**

RWANDA | • KIGALI: **600 + (1600 W.I.P)**

MOZAMBIQUE | • PEMBA: **444**

• NAMPULA: **444**





TANZANIA

FISH COLLECTION POINTS

- **MTWARA:** Capacity of 20 tons per day
- **KILWA:** Capacity of 15 tons per day

SEAFOOD PROCESSING FACILITY

- **ALPHA KRUST LTD**
- KIPAWA:** Processing capacity of 12 tons per day
- MAFIA:** Processing capacity of 11 tons per day
- TANGA:** Processing capacity of 7.5 tons per day

NILE PERCH PROCESSING FACILITIES

- **TANZANIA FISH PROCESSORS:** Processing capacity of 120 tons per day
- **MUSOMA FISH PROCESSORS:** Processing capacity of 35 tons per day

MEAT PROCESSING FACILITIES

- **MAGU:** Processing capacity of 15 tons per day
- **FEED LOT AT CHATO:** Farm Area : 249 Acres, Cattle fattening capacity of 2000 heads

AQUACULTURE

- **SHRIMP FARM:** 31 Ponds spread over 78 HA
- **HATCHERY:** 70 Million Seeds per Annum

FISH & MEAT SALES OUTLETS

Additional Facility for Distribution of FCMG Products

- | | |
|---------------------------|---------------------|
| 1. UKONGA, DAR ES SALAAM | 9. MOSHI |
| 2. MBAGALA, DAR ES SALAAM | 10. MWANZA |
| 3. UBONGO, DAR ES SALAAM | 11. LIWALE |
| 4. TAGETA, DAR ES SALAAM | 12. MBEYA |
| 5. DODOMA | 13. SONGEA |
| 6. TANGA | 14. MSASI |
| 7. MOMBO, TANGA | 15. RUWANGWA, LINDI |
| 8. ARUSHA | |

SUPERMARKETS

- 1. KIPAWA, DAR ES SALAAM
- 2. TUNDURU
- 3. MTWARA
- 4. LINDI
- 5. MUSOMA

CASHEW NUTS PRODUCTION

LEASED FACTORY AT KIBAHA WITH PRODUCTION CAPACITY OF 10 TONS RAW CASHEW NUTS PER DAY



KENYA

NAIROBI

FISH & MEAT SALES OUTLETS

1. ROAD A, INDUSTRIAL AREA
2. NAIROBI WEST
3. TRM MALL
4. NGARA
5. TWO (2) MOBILE SHOPS

KISUMU

SEAFOOD PROCESSING FACILITIES

Processing capacity of 40 tons per day - Lake products

MOMBASA

FISH COLLECTION POINTS

1. MALINDI
2. LIWATONI
3. MBARAKI WHARF

SEAFOOD PROCESSING FACILITIES

- MIRITINI

FISH & MEAT SALES OUTLETS

1. MBARAKI WHARF
2. TUDOR
3. KENGELENI
4. MIRITINI
5. UKUNDA
6. KILIFI
7. CITY MALL



UGANDA

FISH COLLECTION POINTS

- JINJA

SEAFOOD PROCESSING FACILITY

- **KARMIC FOODS LIMITED**
Processing capacity of 45 tons per day
1000 Pallet Position Cold Storage capacity

RWANDA

SEAFOOD PROCESSING FACILITY

- **ALPHA CHOICE RWANDA LTD**
600 + 1600 (W.I.P) Ton Cold Storage Facility

FISH & MEAT SALES OUTLETS

1. GIKONDO
2. NYABUGOGO
3. KIMIRONKO

MOZAMBIQUE

FISH & MEAT SALES OUTLETS/ SUPERMARKETS

- PEMBA

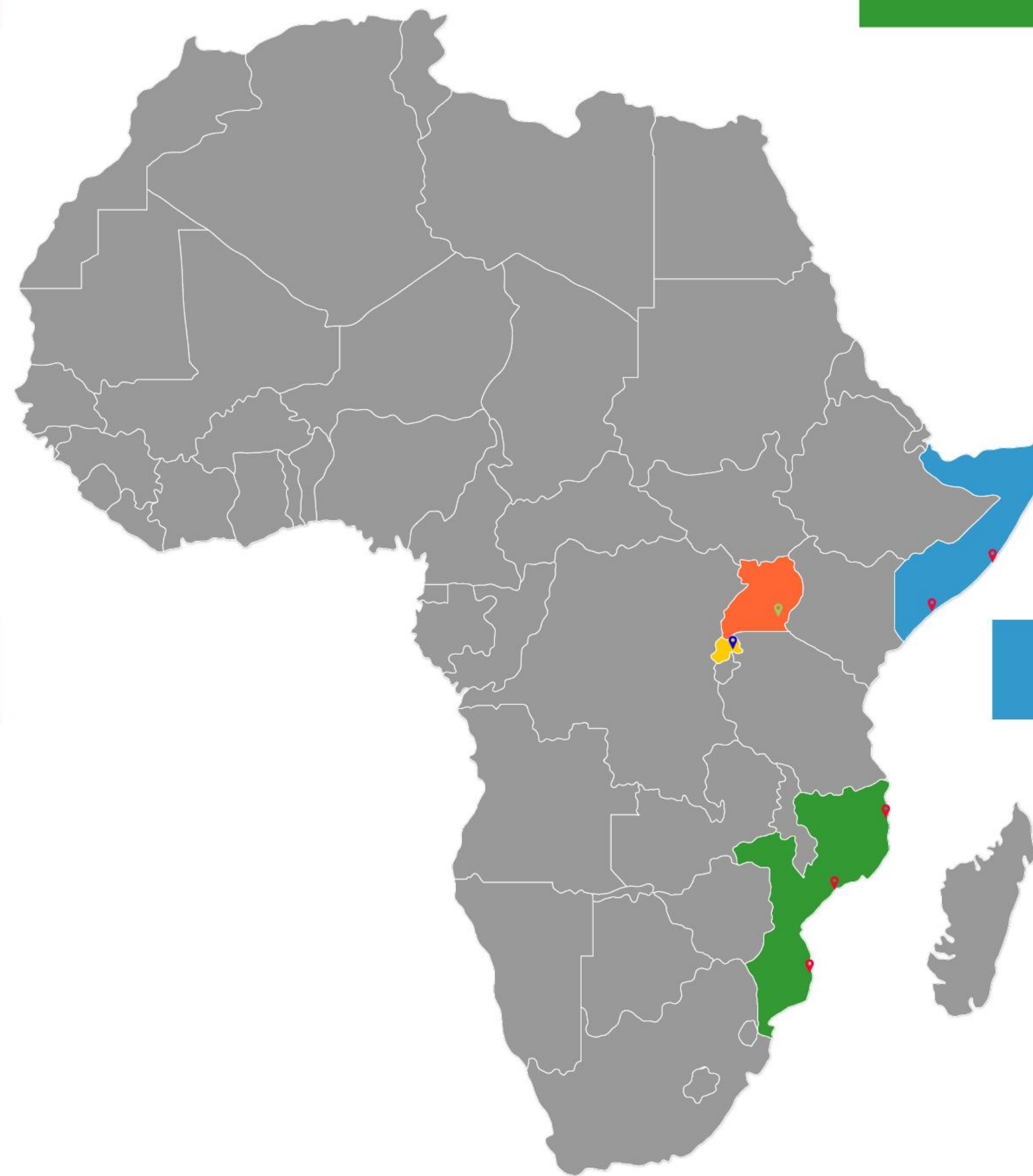
FACILITIES

1. 12,772 SQM MUXARA LOGISTICS YARD
2. ALPHA VILLAGE PEMBA RESIDENCE
3. 100,000 SQM ALPHA VILLAGE PALMA - 400 PAX CAMP

SOMALIA

FACILITIES

- Three (3) Yards at Mogadishu and Kismayu with a total: **14,600 SQM**

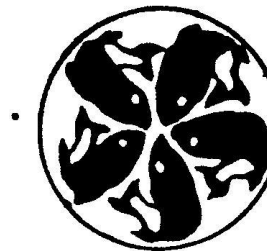




Alpha SEAFOOD



ALPHAKRUST LIMITED



Tanzania Fish Processors Ltd.



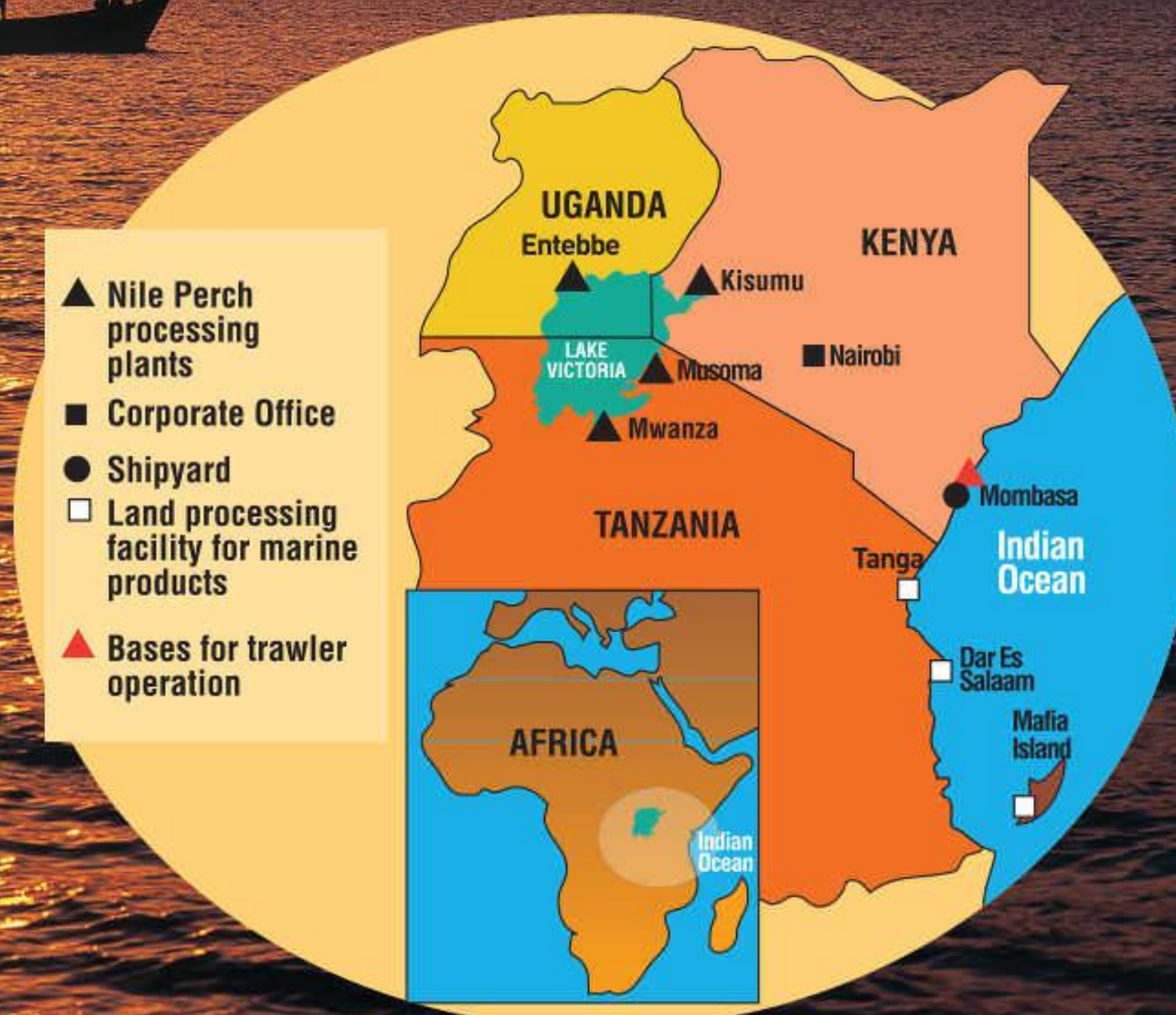
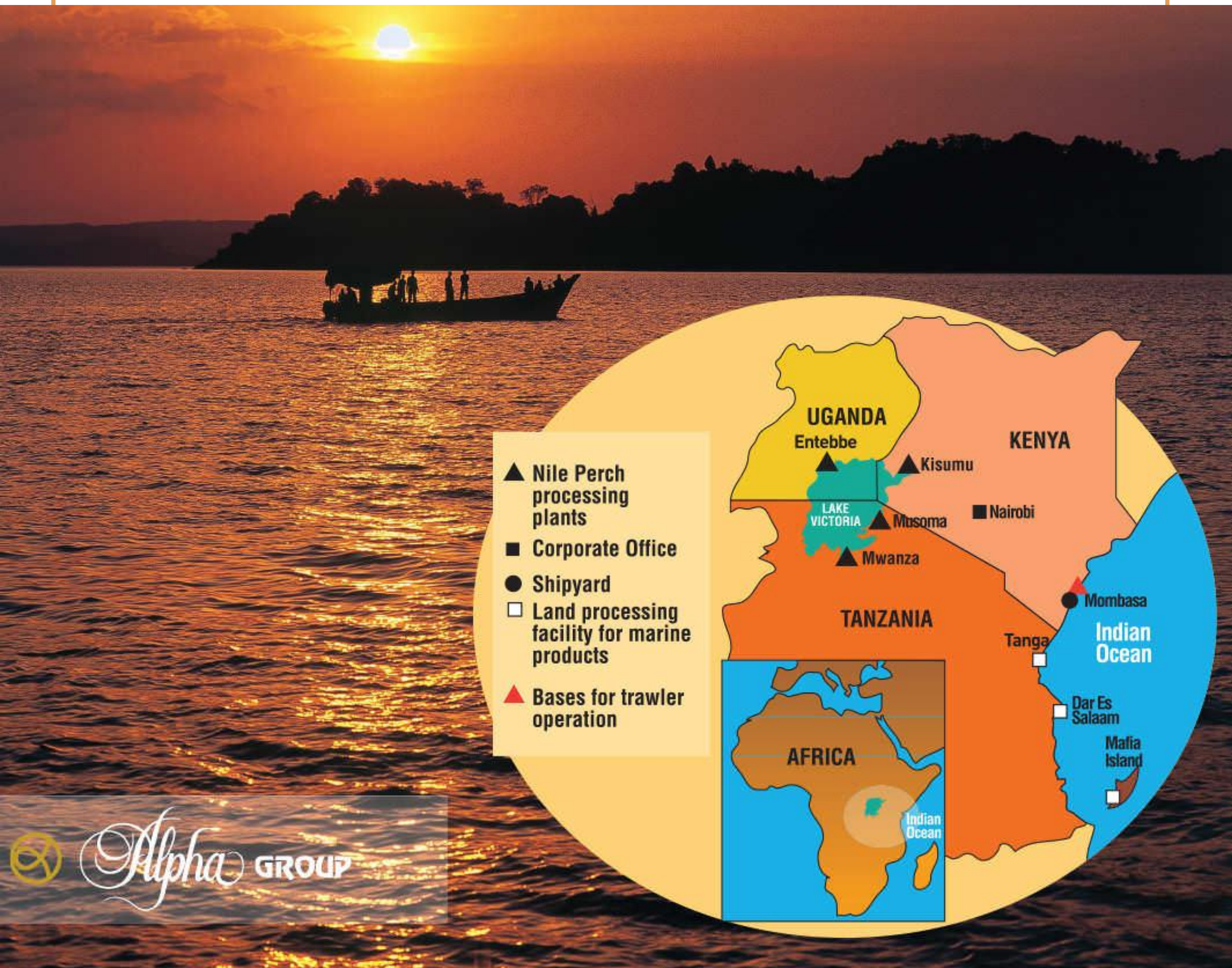
Musoma Fish Processors Ltd.



Samaki Poa



www.alphaseafoodafrica.com



FOOD DIVISION

Our Main products include Nile perch from Lake Victoria, the largest freshwater lake in world and Octopus, Squid, Lobster, Prawn, Crab and other species in the Indian Ocean.

This includes the wild tiger and banana prawns, deep sea lobster and crab frozen on-board, our factory vessels which are modern trawlers with onboard freezing facility and are being operated with the approval of Local competent authority and European Union.





NILE PERCH DIVISION



Nile Perch Latin name *Lates Niloticus* belongs to the Grouper family of fish. It is wonderfully sweet tasting, firmly textured, highly nutritious, and virtually odorless and retains its high moisture content when cooked.

This fish is low in calories, rich in trace nutrients, and its lipid is poly saturated. Origin: Lake Victoria (Fresh Water Lake) FAO Zone 01, Forms: Chilled and Frozen, Products: Fillets Skinless & Skin on, Headless & Gutted, Steak and Loin.



HEADLESS, GUTTED, PORTION AND LOIN

NILE PERCH PROCESSING FACILITIES



East African Sea food Ltd
LOCATION:
KISUMU KENYA
ISO CERTIFIED
BRC ACCREDITED



Musoma Fish Processors Ltd
LOCATION: MUSOMA, TANZANIA.
ISO CERTIFIED.
BRC ACCREDITED.



KARMIC FOODS LIMITED
LOCATION: ENTEBBE, UGANDA.
ISO CERTIFIED.
BRC ACCREDITED.



Tanzania Fish Processors Ltd
LOCATION: MWANZA, TANZANIA.
NATURLAND CERTIFIED.
ISO CERTIFIED.
BRC ACCREDITED.



HEADLESS, GUTTED, PORTION AND LOIN

NILE PERCH PRODUCTS



WHOLE



FROZEN FILLET



CHILLED



FROZEN PORTION AND LOIN

	Nile Perch Fillets Chilled	Red Green	Bulk in Styrofoam Box	1x6 kg, 1x3 kg
	Nile Perch Headless & Guttled Chilled	2000 - 4000g		1x 15kg

	Nile Perch Fillets Frozen	300 - 500g 500 - 1000g 1000 - 2000g	IWP	2x6 kg
	Nile Perch Headless & Guttled Frozen	1000 - 3000g 3000 - 6000g		1x20 kg

	Nile Perch Fillets Chilled	Red Green	Bulk in Styrofoam Box	1x6 kg, 1x3 kg
	Nile Perch Headless & Guttled Chilled	2000 - 4000g		1x 15kg

	Nile Perch Fillets Frozen	300 - 500g 500 - 1000g 1000 - 2000g	IWP	2x6 kg
	Nile Perch Headless & Guttled Frozen	1000 - 3000g 3000 - 6000g		1x20 kg



MARINE DIVISION



- With a large fleet of over 100 trucks, and our own vessels SSSL is perfectly suited to be your temperature-controlled carrier of choice. We have the equipment and the connections for long haul cold and frozen freight crossing into and out of any of the countries in the East African region.
- Meat and fish, fruits and vegetables and other cold or frozen cargo is a perfect match for our expertise.
- With satellite tracking on every trailer, you can be sure your truckload shipment is safe with us.



OPERATIONS



HEAD ON, HEADLESS AND PUD

ON-LAND PROCESSING FACILITIES



East African Sea food Ltd

LOCATION:
KISUMU KENYA
ISO CERTIFIED
BRC ACCREDITED



ALPHAKRUST LIMITED

LOCATION: DAR-ES-SALAM,
TANZANIA.
ISO CERTIFIED
BRC ACCREDITED



ALPHAKRUST LIMITED

LOCATION: MAFIA ISLAND,
TANZANIA.
ISO CERTIFIED
BRC ACCREDITED



HEAD ON, HEADLESS AND PUD

FROZEN ONBOARD / LAND PRODUCTS



ROCK LOBSTER (PANULIRUS SPP)



DEEP SEA CRAB



SQUID (SEPIOTEUTHIS LESSONIANA)



LANGOUSTINE (PUERULUS ANGULATUS)



SAND LOBSTER (PANULIRUS SPP)



OCTOPUS CYANEA



SHRIMPS




CUTTLE FISH (SEPIA SPP)





BLACK TIGER PRAWNS

Aqua-cultured & Wild. Head on, Headless and Peeled undeveined (PUD).


Kenya
Tanzania
Black Tiger Prawn /
Banana Prawn
AQUACULTURE & ON BOARD FROZEN
BLOCK/ SEMI IQF
6 x 2 kg.



WHITE BANANA PRAWNS

Wild and frozen on-board


Kenya
Tanzania
Black Tiger Prawn /
Banana Prawn
AQUACULTURE & ON BOARD FROZEN
BLOCK/ SEMI IQF
6 x 2 kg.





AQUA-CULTURE

Alpha Group is the first in East Africa to build and operate a 100hectare Black Tiger prawn Aquaculture farm in Mafia Island off the coast of Tanzania

Reared in open earthen ponds, using crystal clear unpolluted waters in a sustainable way addressing food safety at every stage of production. Brood stock is selected from strong and healthy adults collected from the wild, that are sturdy, and specific pathogen free. Only the best brood stock used for breeding purpose and young ones are nursed in our state-of-the-art hatchery, adopting a complete natural way of production with a policy of nil use of medicines, antibiotics or any other chemicals



REGIONAL TRADING

Alpha Group import fish from various part of the globe into East Africa. Main varieties are Tilapia, Mackerel, Herrings, among others. These imported fish are marketed widely which is a cheap source of protein compared to other local fish and meat which are very expensive for the population. Many small scale traders and house hold population get employment in dealing with these imported fish varieties . This helps in eradication of poverty and malnutrition among children.

Samaki Poa deals with selling fish locally, and shops are located in geographically identified places to reach fish eating population in deeper parts of Kenya.



CORPORATE SOCIAL RESPONSIBILITY



KEY CSR INITIATIVES

KENYA:

- CONSTRUCTION OF MIRITINI PRIMARY SCHOOL.
- SAPLING TRUST FOUNDATION – Annual provision of Food supplies & Hi-Tech physiotherapy training Equipment for Disabled Children. <http://www.saplingtrust.com/>
- WEMA CENTRE – Annual Funds Contribution to their Rehabilitation Centre
- CEREBRAL PALSY FOUNDATION CENTRE - Annual Fund Contributions to Disabled Children
- LITTLE SISTERS OF THE POOR – Annual provision of Food Supplies.
- BONDENI ORPHANAGE – Annual provision of Food Supplies.

TANZANIA:

- YATIMA ORPHAN FOUNDATIONS: Annual full School support of all expenses for over 100 Children in Mwanza.
- SUPPORTING OF FOUR PRIMARY SCHOOL IN MAFIA ISLAND – Annual provision of Daily Mid-Day Meal for 1,000 students.



Email: commercial@alphakenya.com

Mobile: +254 722 203 156 | +254 733 203 156

Mbaraki Wharf, Near Likoni Ferry
Mombasa, Kenya

www.alphaafrica.com



