



# Summit

SECO Camps & Catering




# CONTENTS



- 01 Remote Work Place Management Solutions in East Africa
- 02 Service. Comfort. Security. Anywhere.
- 03 Design Build Construction Services
- 05 Remote Workforce Housing Solutions
- 07 Modular Camps
- 08 Customized Containers
- 09 Catering Services
- 11 Fresh Food Supply
- 12 Housekeeping Services
- 13 Maintenance services





14 Recreational and Leisure Services

15 Medical Services

16 Supply Chain Management and Logistics

17 Utilities

19 Past and Ongoing Projects

21 Creating Permanently Portable Spaces for Living & Working

22 Containerized Solutions Index



# REMOTE WORKPLACE MANAGEMENT SOLUTIONS IN EAST AFRICA

---



## CERTIFICATION



## OUR HISTORY

SUMMIT: SECO Camps & Catering, central driving purpose is to create an environment where workers feel at home, because at the end of a long work day, we believe that's what your employees want.

Starting from such modest background, we feel that our values and arrangements are more personalized. We provide only the level of service we ourselves would feel comfortable receiving. The level of service provided to the group of execs in the rugged terrains of Lake Turkana wind power project continues to be a

hallmark today that sets SUMMIT apart from its competitors.

## OUR VALUES

We pride ourselves in finding and developing the highest caliber of people. Our people truly make the difference. As you become more familiar with our company, you will see how the principles, systems, and tools we have put in place empower our people to become the best all-around individuals they can be.

We encourage safe, efficient, and quality work in every part of the business.

Our employees become members of the community by providing philanthropy and volunteer work to grow bonds between camps and communities.

SUMMIT works hard to become the leader in temporary housing solutions and man camps. We are experts in modular housing, mobile housing, and hospitality services. No project is too big, or too small; we provide personalized attention in every detail. In fact, we try to help you whether you're a client or not.

Our goal is to be viewed as an expert partner in operating remote man camps.



# SERVICE. COMFORT. SECURITY. ANYWHERE.

## ■ DESIGN BUILD CONSTRUCTION SERVICES

- Camp Design and Construction
- Erection of pre-fabricated and pre-engineered structures
- Provision of Machine and Fabrication shops
- Skilled Labour and Craftsmen
- Maintenance Managers and product-qualified Technicians

## ■ REMOTE WORKFORCE HOUSING

- Permanent Camps
- Semi-Permanent Panellised Buildings
- Modular Housing
- Containerized Housing
- Mobile Man Camp Housing
- Tented Camp Accommodation
- Oil Field Housing

## ■ INTERGRATED CAMP SERVICES

- Catering Services
- Camp Management
- Facilities Management
- Preventive and Reactive Maintenance
- Cleaning and Janitorial Services
- Housekeeping and Laundry Services
- Grounds Keeping, Gardening And Landscaping
- 

## ■ UTILITIES

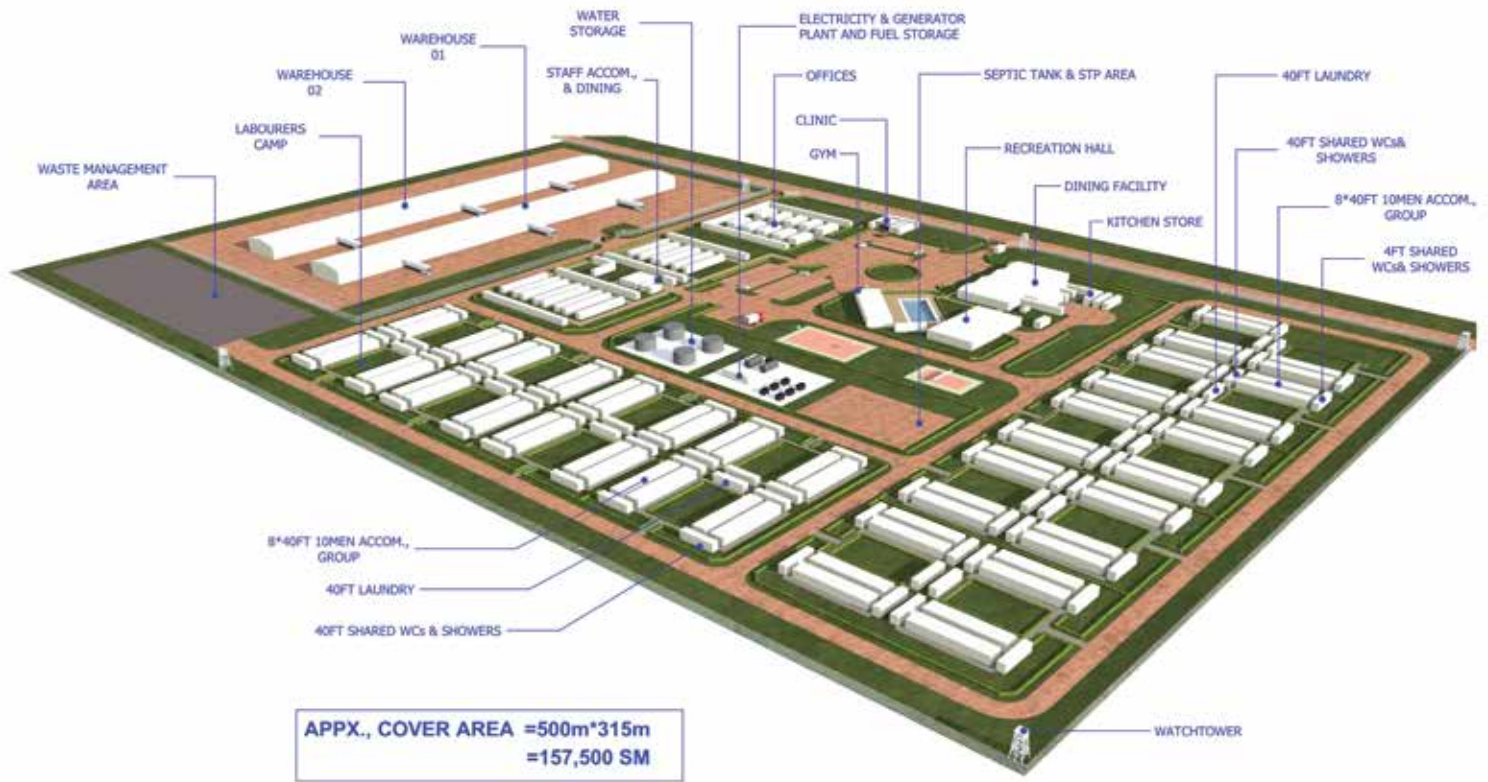
- Sizing and Design of Temporary Power Solutions
- Approved Compliant Grade Fuels Supply
- Water Supply
- Wet and Solid Waste Management Services
- Medical Services
- HAZMAT Treatment and Removal
- Communications
- Pest Control and Fire Safety

## ■ SUPPLY CHAIN MANAGEMENT AND LOGISTICS

- Food Supply
- Sourcing and Product Selection
- Storage - Cold and Dry Warehousing
- Transportation - Land, Marine and Air Logistics
- Document Management
- Customs Clearance
- Supply Chain Modelling

## ■ REMOTE AND VIP SITE SECURITY

- Threat Assessment
- Risk Mitigation
- Provision of Security Guards (Partnerships with the best in this field)
- Access Control
- Security-optimised Camp and Facility Design



# DESIGN BUILD CONSTRUCTION SERVICES

## EVERYTHING IN PLACE AND ON TIME READY TO WORK

Our vast experience in camp management also allows us to offer a complete turnkey operation for your site that includes complete design, supply and build of the camp itself. Working with our specialist construction partners we can get you up and running in East Africa's most remote locations and then support that camp installation at every stage of the project.

That project could be a short-term tented camp for as few as 20 people as

part of a seismic survey, or 10,000 person pre-fabricated facility as the core of a long term mining project. We are one of the only companies in the region that can offer such diverse camps and we do this through long standing strategic alliances with the very best suppliers.

There's no 'one size fits all' approach to camp building at SUMMIT and we will always advise you on the best solution for your situation, even if that solution isn't what you originally had in mind.

All of the camps we design and build are to the highest standard and to the

unique and specific requirements of our clients.

As experts in camp management we also build these camps to run as efficiently as possible, therefore minimising the staffing, power and services requirement. This way you not only get a tightly organised camp but also one that is incredibly cost effective.

We understand the costs involved in working in remote locations and we work closely with our clients to make sure the cost of their camp is not a burden.



## SITE INSPECTION & PREPARATION

From arid landscapes to dense bush and humid, marshy areas, East Africa's landscapes are diverse, harsh and mostly unforgiving. SUMMIT is able to provide practical advice, consultation and site inspection in almost any condition in order to prepare your site for installation.

We believe that a solid foundation is key to a successful project, which is why we like to get involved right from inception.

## PERMITTING

Each site requires specific permits in order to operate the camp and meet certain government and environmental requirements. SUMMIT will oversee

with the permit application process for land tenures, foreshore leases, waste water treatment, potable water treatment and waste management. Once permits are received and a site service plan is prepared, SUMMIT will provide the equipment and support systems to handle these services.

## TRANSPORTATION AND LOGISTICS

Our past experience in remote camp logistics and equipment transportation has enabled us to create an effective supply management team and a network of reliable carriers and transportation solutions which will ensure that your supplies, material and equipment makes it to site.





# REMOTE WORKFORCE HOUSING SOLUTIONS

---

## YOU WATCH, WE BUILD

Addressing the Remote Workforce Housing needs of any temporary facility is a customized experience. Some geographic locations require accommodations that can withstand subzero temperatures, ice, snow, and driving winds. Other projects require housing resistant to excessive heat, humidity, marsh like conditions, pests, and rain. Whatever your project requires, we can provide or find the right solution. The important thing is that your housing is conducive to the climate, space available, local permitting, foundation,

and comfort requirements you request. There are many options available, we will work with you to determine the best approach.

## CHOOSING A MAN CAMP

Because man camps, temporary housing, remote housing, remote hotels, workforce housing, employee housing, RV housing, modular housing, mobile housing or whatever you label it has unique characteristics, we approach each project in a custom way. The most important thing is that the housing identified meets the needs of the client.

It is not in anyone's best interest to offer an assembly line solution "off the shelf" that will require significant setbacks in the future. Needs we have come across pertaining to remote workforce housing are many. Here are a few requirements we have heard from clients in the past: quick set up, budget friendly, reusable, environmentally friendly, easy to ship, mobile throughout the project, self-sufficient, energy efficient, private, comfortable, and innovative. Regardless of your needs, we strive to make sure that the housing for your project is high quality, well secured, and fitting to the requirements.



## INDUSTRIES WE SERVE

Housing is a critical component of the success of any oil, gas, mining, government, hydro plant, pipeline, highway construction, fracking, trucking, highway, military, or construction project. Picking a competent provider is important when you consider all the factors involved in designing, engineering, building, shipping, installing, and final prepping for occupancy.

Another important element to consider regarding housing is how it will be connected to simple infrastructure services like water, sewer, and power. In addition there needs to be experience in setting up full commercial kitchens, laundromats, and protections services such as fire suppression.

## DON'T FORGET!

One item that is often forgotten concerning remote workforce housing is the recreational element. Just as personal homes contain certain elements of entertainment such as theater rooms, exercise areas, and basketball courts, we try to make our facilities recreationally satisfying as well. Options we have included for some clients would include internet cafés, libraries, movie rooms, full gyms, golf simulator machines, arcades, horseshoe pits, basketball and volleyball courts, and soccer fields. Housing is the key to success of any project. It is the first to be set up and the last item to disappear when done. The feeling of the living units sets the morale tone for the rest of the project. Let us help you find the right fit before crisis mode is reached.





# MODULAR CAMPS

---

## END TO END REMOTE CAMP SOLUTION

Managing a remote camp can be difficult; from the logistics involved in mobilising a camp to the resupplying of food, water and fuel in regional locations to managing and training the staff involved in maintaining the camp.

As an experienced camp operator in remote and regional locations, SUMMIT understands how to enable cost efficiencies and reduce risks. As conditions become more extreme and remote, modular camps offer a cost-

saving alternative to fully permanent structures built on site. Other advantages of modular construction are reduced site disruption and environmental impact noise, and increased mobility.

Modular work camps can also be re-used and expanded. SUMMIT designs, manufactures and installs complete modular work camps for remote sites.

These work camps are built at off-site manufacturing facilities and can be shipped by sea, rail or road to anywhere in East Africa. We supply full work camp solutions including:

- ❖ Turn Key remote housing from 50 to 1,000+ people
- ❖ Kitchen complexes
- ❖ Administrative offices
- ❖ Recreation complexes
- ❖ Construction work camps
- ❖ Management Quarters
- ❖ Mine Drys
- ❖ Modular Offices
- ❖ Bunk Houses/Wet Sleepers in various configurations



# CUSTOMIZED CONTAINERS

For Containerised housing for remote living and working, SUMMIT offers comfort, quality and peace of mind.

Designed by a team who have spent years working in remote locations, Our solutions are certified to ISO standards.

Comfortable and secure, our standard offering is either one accommodation unit (with room and bathroom) in a 20-foot container, or two accommodation units with bathrooms in a 40-foot container. However, anything is possible: we are able to custom-design each unit to suit our clients' requirements.

## FLEXIBLE AND FAST INSTALLATION

SUMMIT's containerised buildings are flexible enough to cope with the potential growth of any installation

## WIDE RANGE OF PRODUCTS

Our designs have been perfected over many years and include accommodation, offices, launderettes, ablutions, kitchens, recreational areas, briefing rooms and cinemas as well as shops, stores, etc. Integrated walkways, corridors, staircases and secondary roofing are also available.





# CATERING SERVICES

---

## FOOD SERVICES FOR ANY FACILITY

Through our experiences providing quality food services, we have learned that nothing is quite as important to overall camp satisfaction as great tasting food. We provide your employees with nothing but the best, giving them the experience of a night out each time they enter our dining area. From fresh grilled steaks and baby back ribs to a full service salad bar, your employees will be excited to have us as their dining host.

As part of our catering package, we offer a "Heart Smart" menu, multi-

course dinner/lunch menus, and flexible serving hours. Your employee wellness is most important to us. All of Lone Tree's menus have been reviewed and approved by a professional nutritionist. Also, depending on your needs, we are pleased to offer convenient, pre-packaged lunches available for mining camps, offshore sites, and other remote working areas.

## QUANTITY AND QUALITY

Operating at the highest international levels of quality, taste and hygiene, our food production cycle is professionally

managed and we strictly adhere to ISO 22000:2005 and HACCP standards.

We know that excellent, high quality ingredients make for the best and most satisfying meals. Our goal is to always exceed expectations when it comes to food and time and again we see how successful this approach is. Guests love staying with us because they know they can get a meal that fills them up and tastes delicious.

We set strict standards for the type and level of base ingredients that we utilize in our kitchens.



## EXPERIENCED CHEFS

We hire licensed chefs with hotel and restaurant training and screen them carefully for specific qualities that suit catering in a remote camp setting. Our excellent track record as an employer means we attract the best culinary talent and enjoy low turnover in our kitchens.

## MENUS

What's on the menu tonight? We provide our clients and guests with custom and delicious menus which represent the varieties and tastes preferred by the major ethnic groups being served. SUMMIT offers food services to meet the needs of any area, group, or facility. We work with our clients to put together menus that will satisfy our

guests, provide an adequate number of calories and nutritional content, and fit within budgetary constraints — without sacrificing quality.

## SPECIALTY CATERING

Some clients need or want a level of flexibility, and while we are able to accommodate change requests to the menus we create, this occasionally isn't flexible enough. For these types of clients our chefs take special requests for certain items, adding to the flexibility of our meal plans. An omelet cooked just the way you like it? Our chefs are more than willing to accommodate. We also have a vast dessert selection, for that occasional sweet tooth. Our customers love eating at SUMMIT camps.





# FRESH FOOD SUPPLY

---

## SUPPLY CHAIN MANAGEMENT

In order to guarantee sufficient stock at all times, based on the number of consumers and our clients' requirements, SUMMIT implements strict storage and supply procedures in all of its camps.

## RESPONSIBLE FOOD MANAGEMENT, EMPOWERING HEALTHY LIVING

- ❖ Fresh food (fruit, vegetables, dairy products)
- ❖ Dry and canned food (meat, fish,

vegetables, fruits)

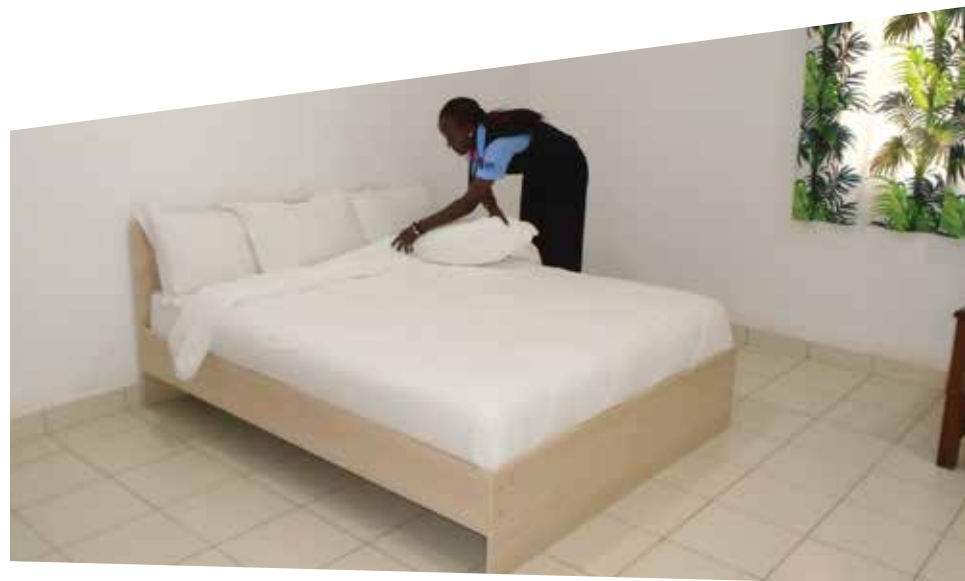
- ❖ Frozen food (meat, fish)
- ❖ Powders and spices
- ❖ Bottled water and beverages
- ❖ Wines and spirits
- ❖ Meals ready to eat (MRE)

## QUALITY STANDARDS

Our company and our partners operate following internationally recognised

quality standards concerning hazard management, quality management, products traceability, environmental management, and occupational health and safety assessment.

Thanks to its 60+ years of experience in the delivery of fresh cut products across the East African region, Alpha Group owns the equipment and staff able to take in commissions promptly, follow them through and grant a precise and quick delivery through road, seaway and airway means of transport.



# HOUSEKEEPING SERVICES

## BE OUR GUEST

We want your employees to feel right at home. We are happy to provide a full housekeeping service to allow them a fresh environment at the end of each day.

They will return to clean rooms, fresh linens, crisp towels, and the most comfortable atmosphere we can provide.

A clean environment is key for healthy, satisfied employees.

## SERVICES WE PROVIDE:

- ❖ Signature Room Service
- ❖ Restroom Cleaning Service
- ❖ Linen Service
- ❖ Dining / Rec Room / Hallway Cleaning
- ❖ Office Cleaning
- ❖ Deep Clean Rotation Schedules
- ❖ Daily Cleaning Reports & Monitoring
- ❖ Carefully Screened Housekeepers





# MAINTENANCE SERVICES

---

## KEEP YOUR FACILITY IN PERFECT ORDER

SUMMIT provides full facilities maintenance for remote sites including, general, building, preventative, corrective and curative maintenance.

Replacing furnace filters, changing light bulbs, refueling tanks, carpets cleaning, and washer/dryer maintenance, etc., are all done by our maintenance team, leaving your employees to enjoy their time at our facility while it is in working order.

We can also arrange inspections of facilities by means of drones, in particular to carry out certain types of maintenance activities (e.g. roof repair, maintenance of equipment located in high positions, etc.).

## MAINTENANCE BENEFITS OUR CLIENTS ENJOY:

We transform everyday man camps into clean and organized temporary housing facilities. Enjoy the peace of mind knowing your investment is in good hands.

- ❖ Immediate Attention to Wear and Tear Items
- ❖ Preventative Maintenance Schedule
- ❖ Fire Suppression System Maintenance
- ❖ Access to Maintenance Records & Facilities Reviews
- ❖ 24 Hour Availability
- ❖ Professional Staff
- ❖ Safety Hazard Repairs
- ❖ Transparent Approach to Costs



# RECREATION & LEISURE SERVICES

We know that it can be difficult living far away from home, particularly in harsh, isolated and often extreme conditions. That's why our residents' satisfaction is our main objective. We pay particular attention to the key moments in their daily routine and strive to create a pleasant atmosphere on our operational sites. We aim to provide as many services as possible to improve our residents' quality of life, such as a swimming pool, a gym, a library, and various other facilities and activities. In the LTWP Project, we have created a gym, thus allowing a sports coach to offer fitness sessions to our residents.

## HEALTH AND FITNESS

Employee health and fitness isn't just 'a nice extra'. It's the key to a productive, motivated workforce. Help people make healthy lifestyle choices. Provide them with fitness facilities. That's how SUMMITS improves health and wellness. Other amenities include:

- ❖ Bar Services
- ❖ Canteen
- ❖ Retail Services
- ❖ Entertainment Areas





# MEDICAL SERVICES

---

## PREVENTION IS KEY FOR MINOR TO MAJOR ACCIDENTS

When medical hospitality services are requested, we offer multiple options. In the medical field there is a vast range of services available to the general public. Some are as complex as open heart surgery, others are as simple as treating a minor cut. In offering medical solutions for camps we are also faced with a vast array of options and different levels of treatment.

The overall benefit of having some level of medical assistance and facility

is peace of mind. You can feel secure knowing that if there were an unfortunate accident or sickness there would be capabilities to provide medical attention or quick transport to a comprehensive medical facility, clinic, or hospital. This is even more important in the event of an emergency. Having this service added to your man camp package could prevent further injury, disability, and/or death.

First aid kits are also placed strategically around the facilities that are consistently rotated to meet local regulations. We encourage our staff to participate in periodic trainings to review contents

within such kits and train on how and when to use the supplies contained therein.

Options Available in Our Medical Hospitality Services Packages:

- ❖ On Site 24 Hour Medical Staff
- ❖ On Site Ambulance Services
- ❖ First Aid Kits Placed Strategically Around the Facilities
- ❖ Trainings: EMT & CPR
- ❖ Local Emergency Services (On Call)



# SUPPLY CHAIN MANAGEMENT & LOGISTICS

---

With many years' experience in East Africa, we have developed an extensive international supply chain with the capacity to negotiate and source great supply deals on behalf of our clients thereby getting them value for their money

We plan effectively, analyzing and mitigating supply chain risk, and we also have extensive experience in humanitarian logistics, providing fast and efficient supply of goods and services to NGOs and UN Missions responding to emergency situations.

Our Warehouse Management System and Material Request Management System allows SUMMIT to monitor and control stock levels at all times.

The WMS allows for the implementation and support of proper and audited inventory procedures with a proven track record.

The SUMMIT WMS is fully integrated with other AFEX software to provide full transaction visibility across the supply chain.

## LAST MILE

But of course it's not just people you need to get to your site. SUMMIT offers an array of services and innovative solutions designed to ensure your products, tools, equipment, food and pretty much anything and everything arrive on time and in perfect order.

Importantly, our diverse range of services makes our logistics strategies totally impartial – we simply recommend the best solution to meet the requirement.



# UTILITIES

---

## DON'T FORGET THE UTILITIES!

We know the importance of having a fully functioning, reliable facility. Our typical utility package features water, power, and septic / wastewater. Beyond these options, SUMMIT provides our guests with fast internet and dependable cell phone service, allowing them to feel at home, at ease, and connected to the world.

## REMOTE CHALLENGES WITH UTILITIES

Rarely are systems like high line power, culinary water, or city sewer systems available. In fact, quite the opposite is true. Often we find ourselves drilling

test holes to determine best locations for water wells, storage tanks, etc. Or, in the case of sewer we have to test the percolation rates of the native soil to determine whether an underground leach field, mobile treatment plant, or evaporation pond is better suited for the project. Finally, we often run our own power, overhead or underground, while utilizing generators on the front end to service electricity needs on a temporary basis.

These processes take time and cooperation from local and state governments, permitting entities, and you, the client. But they are important to review from the beginning of the project because these costs can equal 15-20% of the costs of the project. However, if

done right, they will be an asset to the infrastructure of the local community for years to come. We have learned a lot along the way and would love to share with you the tricks of the trade to avoid pitfalls in putting in utilities and then incorporating them into the camp project.

## POWER

Reliable power is crucial to remote sites. Your employees expect it, and we are happy to accommodate. We will determine the proper power source, handle all the permits associated, and oversee connectivity. We also provide a back-up generator as a secondary power source if a need should ever arise.



## WATER

We help our clients in determining the best water source (municipal lines, wells, natural springs, etc.) to provide for their facility needs. We secure all necessary permits, engineer connections, and manage installation. For continual security, SUMMIT monitors water quality and maintains piping systems to avoid complications associated with freezing, etc. Our systems help to conserve water, reducing cost for clients and generating the least impact on the environment.

## WASTE WATER MANAGEMENT

For wastewater and septic needs, SUMMIT provides several options including the use of existing sewer lines, septic tanks, leach fields, mobile sewer

treatment plants, or manual removal from site. We also continue to monitor and maintain the lines to prevent unnecessary worries. We have even found cases where it is advantageous to the local area to re-infuse waste water into local irrigation systems to help the community and prevent expensive removal methods. There are options.

## COMMUNICATION

Guest satisfaction is greatly affected by communication options. SUMMIT provides fast internet and reliable cellular service to ensure that your employees stay connected. SUMMIT strictly enforces proper use of internet at all times to protect both our guests and our clients. We are prepared to discuss several options to fit your needs best.





# PAST AND ONGOING PROJECTS

---

## WHAT MAKES US DIFFERENT

We are transparent in everything we do. We want you to see what we are doing and how we are doing it so you can gain value from what we've learned. We also realize that we can only improve if others know where we are at. So if there is something you don't understand about our company, industry, or methods, ask us. We'll tell you. Feedback is greatly appreciated. Our goal is to learn and grow. Our business model is also different from others in the industry. We maintain a lean team, choose our clients carefully, and operate high quality,

classy, contract camps for companies who care about their employees. That way we can give you the best value for your money.

## WATCH US GROW!

We are obsessed with creating and maintaining facilities that keep our guests productive, safe, happy, and healthy.

Workforce housing lodges constantly go through fluctuations in occupancy based on market conditions and other factors. We embrace these challenges and

deliver consistent, strategic solutions that benefit everyone.

Just look at where we've been, where we are, and where we're going to understand better that SUMMIT is committed to creating great experiences for our clients, our guests, and our communities.

Whether your project involves activities on an offshore oil platform, a mine in the desert, a major construction site or in a military area of operations, SUMMIT will assist you at each stage of your project and endeavour to improve the comfort of your operational teams.



### 1. LAKE TURKANA WIND POWER PROJECT

Construction and Full camp management for 150 people in Loiyangalani District, Marsabit County, Kenya for Lake Turkana Wind Power Project (LTWP)

### 2. ACCOMMODATION FOR AMISOM

Construction of a permanent camp for 210 people in Somalia for UNSOS

### 3. ANIPSOTIKI CAMP

Full camp management for 60 people in Loiyangalani District, Marsabit County, Kenya for Anipsotiki

### 4. VESTAS CAMP

Construction of containerized camp and Full camp management for 30 people in Loiyangalani District, Marsabit County, Kenya for Vestas

### 5. OIL EXPLORATION IN TANZANIA

Construction of tented camp and Full camp management for 120 people in Pangani, Tanzania for Pan African Energy

### 6. AMINEX CAMP

Construction and Full camp management for 100 men in Loiyangalani District, Marsabit County, Kenya for Aminex

### 7. SIEMENS CAMP

Construction of containerized camp and Full camp management for 50 people in Loiyangalani District, Marsabit County, Kenya for Siemens

### 8. CAMP MBALI

Construction and Full camp management for 30 men in Loiyangalani District, Marsabit County, Kenya for Worley Parsons

### 9. FUJITA CAMP

Construction of modular structures and Full camp management in Mombasa, Kenya for Worley Parsons

### 10. UNSOS - SOMALIA

Supply of 210 containerized accommodation units

# CREATING PERMANENTLY PORTABLE SPACES FOR LIVING AND WORKING.

The Containerized Unit is the most common solution utilized as either living or office accommodation to be rapidly deployed in critical environments throughout the world.

The units are supplied in a flat-pack configuration, including all prefabricated components and electrical system. The structure has been designed to withstand, without any problems, any stress induced by handling, lifting or transport by trucks, rail or sea. The structures have been also designed to withstand the seismic and hurricane actions.

The design has been carried out especially taking into consideration the ease of assembly and erection, in order to allow untrained and unskilled manpower to install the modules utilizing "standard" tools or minor electrical tools and the standard handling equipment.

The engineering of the structures focuses on a modular design which enables a further extension of the existing buildings in any direction without limits through the replacement of a few different components.

The internal partitions can be easily added or removed, without compromising the structural soundness. Due to the flexibility of the design and the interchangeability of the wall panels, the location of the doors and windows can be changed during the erection as well as the external panels and doors can be used for internal usage, if necessary. The surface protection and the choice of proper material grant a very long life-span, even if exposed to the most critical environmental and climatic conditions.

Due to the construction characteristics, the containerized units can be easily disassembled, re-packaged and relocated without compromising the quality and the functionality of the components, simply utilising some consumable items. With over 20 years experience in shipping container conversions, we have pretty much seen and done it all, but we know that every customer is different with different needs. We can supply whatever you need with a huge selection of bespoke features.



## EXPERIENCED TEAM

Our shipping container conversions team are fully experienced, dedicated and used to satisfying customers' varied container conversion requirements. Our know-how means that any size or location of hired container can be installed quickly and efficiently. From the basic container size and shape, Universal Containers will modify and install to any customer specification.

Over the last two decades, we have become the first choice for many customers seeking shipping container conversions, as we have taken standard ISO shipping containers and transformed them into simply wonderful and practical spaces for our clients.

Using standard containers or cabins we can take a sketch or list of requirements and make your idea a reality. Whether it is a small single unit project or large multi-unit, we have the team to facilitate your needs and complete your converted containers.

# INDEX

|                        |    |
|------------------------|----|
| Accommodation Units    | 23 |
| Office Units           | 24 |
| Toilet / Shower Blocks | 25 |
| Laundry Units          | 26 |
| Medical Structures     | 27 |
| Laboratory Units       | 28 |
| Workshop Units         | 29 |
| Conference Room        | 30 |
| Kitchen Units          | 31 |
| Dining Units           | 32 |
| Site Canteens          | 33 |
| Multi-span Structures  | 34 |
| Refeer Containers      | 35 |
| Mixed-use Units        | 36 |

# ACCOMMODATION UNITS



Whether utilising brownfield sites for interim use or long-term deployment, the units can be offered on long-term lease or purchase.



## JUST LIKE AT HOME

Being converted from 20' and 40' ISO shipping containers our sleeper cabins are anti-vandal, and benefit from being stackable using either crane or forklift. Our sleeper cabins come as either a twin sleeper or a single sleeper, and both units benefit from an integrated bathroom, with toilet, sink, and shower cubicle. Sleeper cabins can be connected to either mains services, or used in remote areas in conjunction with a generator, water bowser, and effluent tank. Our sleeper cabins can also be transported and shipped using intermodal methods such as road, rail, and sea, as they are plated as an ISO unit.

Our sleeper cabins also fit perfectly in to our existing hire fleet, and can be incorporated into a construction site set-up alongside storage containers, toilet blocks, shower blocks, and canteen units.

## ALL OUR SLEEPER CABINS INCLUDE THE FOLLOWING:

- ❖ Fully Insulated
- ❖ 3' Single Bed
- ❖ Wardrobe
- ❖ Mirror
- ❖ Workspace
- ❖ Chair
- ❖ Electric Shower
- ❖ Hand Wash Basin
- ❖ Toilet
- ❖ Fire Extinguisher
- ❖ Smoke Alarm
- ❖ Emergency Lighting

# OFFICE UNITS



Single Container Office or a Multi-Storey facility, We Create Beautifully Crafted Clean and Modern Work Spaces.



## IDEAL SPACE AND COMFORT

The very design of containers make them perfect not only for secure storage but also for safe and secure site office units. Our secure container offices are available as new or used (refurbished) nationwide.

We can place partitions inside of the container to create separate areas, and can offer extra heaters, power points and lighting where you need them.

We can create standalone units, or combine them. Our office units have the following standard specifications. However, we can also build to our customers' completely bespoke specification if required.

Available in sizes: 10ft, 20ft and 40ft.

Safe, secure and affordable office space can be hard to come by - luckily we are the answer.

## FEATURES

- ❖ Anti vandal, secure and weatherproof.
- ❖ Open plan or various other configurations available to meet your needs
- ❖ Combination units available, combining an office with storage space, canteen or drying room
- ❖ Lighting and electrics provided
- ❖ Complete with lined and insulated walls
- ❖ Stand alone, side by side or stacked
- ❖ Air-conditioned

## OPTIONAL EXTRAS

- ❖ Desks
- ❖ Chairs
- ❖ Filing and stationery cabinets

# TOILET / SHOWER BLOCKS



Having quality toilets and shower facilities on construction sites is essential, and we've got it covered.



## DURABLE

Anti-vandal shower blocks are used both in the construction industry, and also the event hire industry. We provide shower blocks in two sizes, a 3 bay, and a 6 bay both of which are ISO container conversions, and therefore are highly durable, and feature fork pockets for lifting, and corner posts for craning on and around site. Although our portable shower blocks are predominantly connected to mains electric, water, and waste; for more remote sites, they can be connected to a generator, water bowser, and effluent tank. All of our anti vandal toilets can be used in conjunction with an effluent tank, or connected to the mains waste if available. If you choose to use an effluent tank, this can be emptied at a frequency to suit the level of use on site. Our range of toilets can be manoeuvred using either a forklift, or crane, making them easy to position on site, and they are all made from steel making them secure and durable.

## FEATURES

- ❖ Anti vandal, secure and weatherproof.
- ❖ Single sex, male/female blocks and combination units with shower available to meet your needs
- ❖ Can be connected to mains waste drainage or we can supply a separate waste holding tank as an optional extra
- ❖ All units are fitted with sinks to allow hand and full arm washing
- ❖ Fitted with non-concussive aerator taps and dual flush cistern, to save on water
- ❖ Lighting and electrics provided
- ❖ Complete with lined and insulated walls
- ❖ Air-conditioned
- ❖ Fitted with water heaters

# LAUNDRY UNITS



All our laundry units are easy to clean and will stand up to the most demanding uses. Laundry solutions customized for your needs.



## CLEANLINESS

Because the washing machines are mounted on extendable rails, it takes less than 5 minutes to pull out a unit for servicing. The transport protection mechanism for the washing machines is functional when both installing and dismantling the container. Two high-capacity extractor fans have been installed to regulate humidity levels in the container. Both fans start when the light switch is activated, and will continue as long as the lights are on.

The container has two air-conditioning units. Both units have cooling and heating functions to provide a stable indoor temperature. The system is closed, so no air is inducted from outside. If the temperature outside the container drops below that for which the air conditioning system can compensate, additional heating is required. An electric ribbed radiator has therefore also been installed in the container.

## FEATURES

- ❖ 20 / 40 feet container built to ISO standard
- ❖ 6 high-quality Miele industrial washing machines with automatic soap dispensing system (optional)
- ❖ 6 high-quality Miele industrial tumble dryers
- ❖ Air-condition units
- ❖ Extractor system
- ❖ Shelving system
- ❖ Water processing system (optional)
- ❖ Bug zapper
- ❖ Our containers are equipped with a proprietary levelling system that enables optimal levelling in the field (optional)
- ❖ Appliances are connected to a pipe system concealed inside the container walls.

# MEDICAL STRUCTURES



Sterile, customizable and transportable  
medical containers for application anywhere  
and at any time.



## CLINICS

Clinics and infirmary centres can be built from a 6 m or 12 m container and in some cases containers can be joined together to come up with the required floor areas. It is also possible to have clinics with beds for overnight detentions fitted with all the necessary equipment where possible.

Complicated structures from emergency units to operating rooms, polyclinics to rest areas and to social facilities in prefabricated hospitals are safely constructed with experience. Today, together with development in health services, the need for health buildings have increased building budgets to high levels. With its modular structure, in terms of the budget for health building expenses.

Apart from costs, safe and rapid presentations of health services have gained importance



## PHARMACIES

For this reason, we construct large spaces creating good service environment with fabricated buildings. A good insulation, safe structure model and comfortable places conformable with the environment are important factors for hospital complexes. Modular buildings constructed conventional technique on-site by monitoring quality of building under facility conditions and with saving on time and keeping an optimum level of production costs, these advantages are reflected on building costs positively in terms of customer. The architectural design and aesthetic impact of the outer coatings, inner decorations, roofs, windows and doors are also made in accordance with customer's requests.

Indispensable parts in hospital facility such as central heating and air conditioning, central nurse calling system etc



# LABORATORY UNITS



Ideal for a range of analytical testing and monitoring as well as for mining, petroleum, industrial and specialty applications.



## ANALYTICAL ASSESSMENT

We are able to offer the perfect solutions for your container laboratory, whether it is to be used for medical or chemical testing, or in a industrial capacity. These labs can be built using the shell of an ISO shipping container or they can be custom built.

Some specifications may include the unit being air tight, or on the other hand it may need to be well ventilated with specific extraction systems. Our labs are lined using non-combustible spray foam insulation or ridged insulation boards and faced with either MFC or FR30 steel lining. There are several options available to modify the containers floor to ensure they are safe and easy to clean; overlaying the original marine ply wood using 3mm steel durbar or polysafe non-slip vinyl, or removing the ply wood completely and creating a chemical bund.



## EASILY TRANSPORTABLE

SECO's Container Labs are easily transportable units that can be installed in even the most remote locations. Made from superior construction materials, our Container Labs provide reliable HVAC, filtration systems and simplified controls.

Our Modular Container Labs provide energy efficient HVAC.

The unit's air filtration systems are designed to meet BSL-2 requirements.

Innovative containerized lab concepts provide easy intermodal global shipping options. Single and joined double-container configurations are available.

Easier to operate, Less money to maintain, Local compatibility



# WORKSHOP UNITS



workshop containers are wind, water and vermin proof, making them resilient in the roughest of work environments.



## TOUGH IN NATURE

Shipping containers make perfect workshops; they are strong and robust, come in all shapes and sizes, are weatherproof, secure and can have all manner of conversion work carried out on them to ensure you make the most out of your container.

Containers can be made into workshops by fitting doors, windows, roller shutters, lighting, electrics, water supply, and heating.

We can also kit them out with all kinds of furniture and accessories including shelving, work benches, drawers, alarms, hooks, locks and lockboxes, mesh cages, grafo therm and insulation... the list is endless.

Of course, we also supply empty, unconverted containers for you to fit out as you wish.

## MODIFICATIONS

- ❖ A high security personnel door placed into the existing container doors.
- ❖ The original container floor overlaid with 3mm steel checker plate and fitted 10 spring loaded recessed lashing rings.
- ❖ A steel mesh partition with a lockable door.
- ❖ Steel shelving.
- ❖ Work bench with heavy duty vice
- ❖ Steel tool cabinets.
- ❖ Steel storage bins.
- ❖ Steel framework for hanging lashing.
- ❖ Vapour proof fluorescent lights
- ❖ External isolator and generator socket.
- ❖ Exterior painted in customer's chosen colour

# CONFERENCE UNITS



The structure of our firm enables us to obtain high quality and extraordinarily personalized results.



## BASIC, PREMIUM OR EXECUTIVE

A collaborative meeting room where everyone can convene is important in any workspace. Our conference package makes it more inviting with a mini kitchen set-up, white boards and flat screens – everyone will be ready to work. Our conference room packages are thoughtfully designed to fit in your space – saving you up to 30% in costs and 100% in time.

### BASIC

- ❖ Two 5 ft. folding tables
- ❖ Four Folding chairs
- ❖ One Mini-fridge
- ❖ One Microwave
- ❖ One Whiteboard
- ❖ One 23 gal. trash can



### PREMIUM

- ❖ Includes Basic package plus
- ❖ Two 5 ft. conference tables (in place of the folding tables)
- ❖ One 5 ft. utility table
- ❖ Eight Manager's chairs (in place of the folding chairs)

### EXECUTIVE

- ❖ Includes Premium package plus
- ❖ One Full refrigerator (in place of mini-fridge)
- ❖ Two Whiteboards (3 total whiteboards)
- ❖ One Keurig®
- ❖ One 50 in. flat screen monitor
- ❖ One 20 ft. HDMI cable
- ❖ One TV wall bracket



# KITCHEN UNITS



We convert shipping containers into professional, hygienic kitchen facilities, from basic to luxurious kitchens.



## COMMERCIAL KITCHENS

Our line of portable commercial kitchens has a variety of applications. These containerised kitchens are large enough to hold a full commercial cooking operation and because they're highly portable, they're ideal for use in urban settings or rural areas including mining camps and relief operations. With a kitchen of this size, you easily prepare food for up to 200 people at a time. Ensuring that your food area will be of a high standard and the cooking conditions you maintain will be hygienic, air conditioning also comes standard to ensure the climate inside the kitchen is as comfortable as possible.

Currently, SECO kitchen containers come outfitted with benching and counter space, stainless steel, state-of-the-art industrial appliances, and commercial grade lighting and plumbing.



## EXTRA ACCESSORIES

In addition to the uses described above, these containers work perfectly for festivals, special events and community projects. While we do offer models for purchase, we also have a line of mobile kitchens that you can hire and use for a short term projects.

With a power source and plumbing hook-up, these kitchens can be completely self-sufficient and can operate indefinitely in any location.

We can also add a variety of extra accessories to bring your kitchen operation up to your desired specifications.

If, for example, you need more than the standard plumbing, lighting or electricity infrastructure on one of our kitchen containers, we can make these upgrades. Extra doors, windows, shelving and appliances can all be built in as well.

# DINING UNITS



Dining hall containers are particularly preferred at work-sites of construction companies for their practical & comfortable use.



## COMFORTABLE FIELD SOLUTIONS

Pleasant meals can only be experienced at ergonomic and hygienic spaces. We construct dining hall buildings in accordance with international standards for construction sites, large-scale events, seasonal and permanent recreation areas, resorts, hospitals, schools, exhibitions and military camps. Following production of modules in our technologically-equipped facilities, modular dining buildings are erected by expert installation teams and delivered turnkey in short period of time.

Modular kitchen units are well-insulated against internal and external effects, such as sound, heat, cold and wind. The buildings are designed and customized according to client's expectations and kitchen space, external entrance to kitchen, restrooms, heating, cooling and ventilation equipment and other additions are available.



## CUSTOM DESIGNED

Windows placed properly on dining hall container walls enable optimum daylight inside the container. Products can be made with custom widths and heights provided that they are within strength limits permitted by regulations.

Dining containers which have higher ceilings than other container types are accordingly made of stronger materials. They have a large, functional and ergonomic design to ensure that several people can have lunch in comfort.

Interior sections can be custom designed. Wide interior space allows installation of heating and cooling systems, providing a healthy and spacious environment. Container ensures high comfort level with appropriate insulation materials on exterior and interior walls ensure a while it makes a difference with roof coating.



# SITE CANTEENS



We provide a safe, warm and secure place to unwind at a busy site. With available water heater, sink and work surfaces.



## A CLEAN AND COMFORTABLE PLACE TO TAKE A BREAK

Anti vandal site canteens – often referred to as messrooms – are the most common site accommodation unit used.

No workplace is complete without the perfect canteen - and we have the secret recipe. On any site, providing a place for employees to eat and relax is of utmost importance as far as welfare is concerned.

Having heat, water, and work surfaces available allows basic comfort and hygiene needs to be met. Our site canteens are manufactured from full steel, anti-vandal construction ensuring site safety and security.

All of our canteen units can be modified to suit your exact requirements and can be used as a standalone unit or in combination with others.

## FEATURES

As standard, our canteens solutions include:

- ❖ Comes with sink, worktop, water heater and cupboards
- ❖ Furniture and white goods available on request
- ❖ Wall mounted heaters
- ❖ Reinforced, safe secure steel structure
- ❖ Insulated floor covering
- ❖ Reinforced doors with secure locking
- ❖ Lockable window shutters
- ❖ Vertical sliding windows
- ❖ Combination units available
- ❖ Jacklegs available for larger offices for stability

# MULTI-SPAN STRUCTURE



ISO units can be stacked securely & safely, and are a favoured option for modern day site managers.



## CONTAINER STACKING

Modern construction sites are often small, and therefore it is necessary to maximise every bit of space that you have for your site accommodation units by container stacking.

SECO understand this, and that is why we build our units so that they can be double stacked to optimise ground space, and fully utilise the useable area on site.

## WHAT UNITS CAN BE STACKED

SECO have based the majority of our site cabins on the 20' x 8' ISO Shipping container. Using shipping container conversions for our site accommodation units means that they are perfect for container stacking as they have an ISO container frame, and ISO corner casts to easily and securely lock the containers together.



## IS IT SAFE TO STACK

Stacked units are approved on all major construction sites, and many of the main contractors will stack their own units too.

We consider our containers and cabins to be the most secure as we use container conversions to ensure the units sit flush on one another, and are therefore completely safe

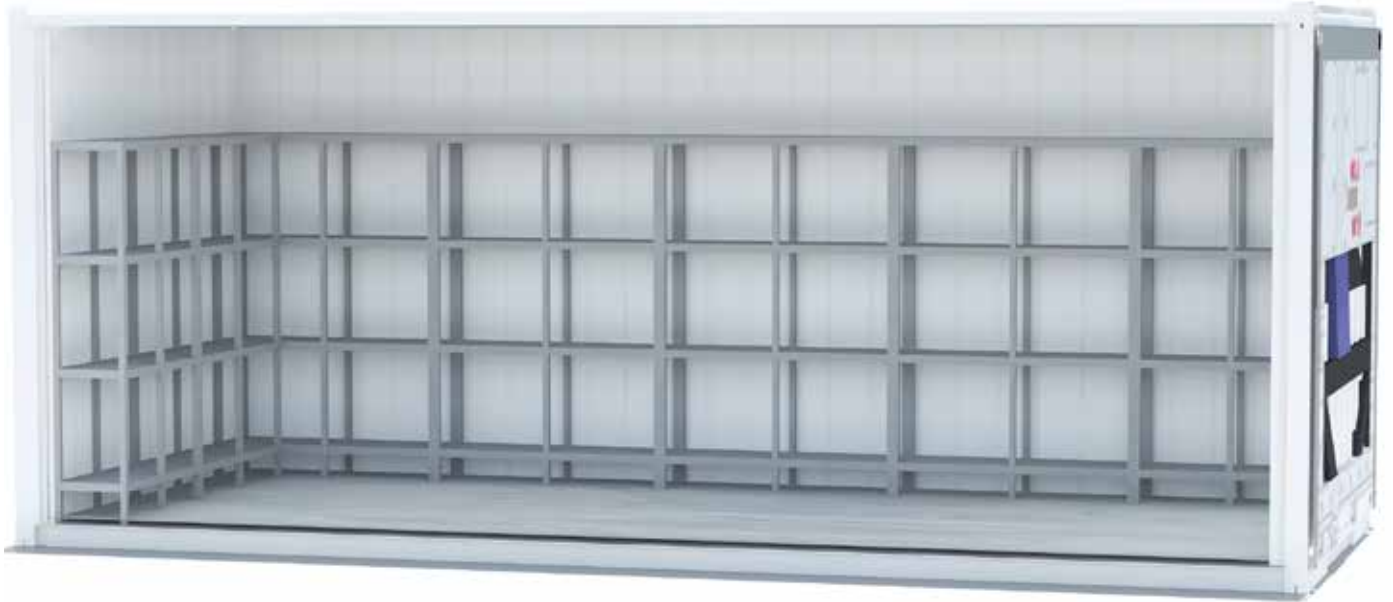
## HOW DO THE STAIRCASES WORK?

SECO uses a 13 tread steel staircase which has a landing platform and steel legs that meet the floor.

The landing platform has railings all the way around the sides, and down the steps, and it is connected to the base of the stacked cabin.



# REEFER CONTAINERS



Temperature controlled spaces for storage and transport use ranging from -40 °C up to +35 °C depending on machine.



## CONTROLLING THE TEMPERATURES

Efficient shipping of perishable commodities is vital to the growth of your business. Reliable, safe passage via an unbroken cold chain is essential to ensure that your goods arrive in the exact condition intended.

All our models are ISO standard containers which are also suitable for international transportation.

Our reefer containers are fully insulated. Their inner surfaces are made of stainless steel and aluminum, which makes them easy to wash clean. Our reefer machines operate with 32 A 3-phase 5-pin or maritime plug, based on your preference.

Reefers can be equipped with plenty of accessories, such as a flat floor, easy to open doors, lights, PVC-curtains and remote monitoring.

## OPTIONS

Kindly note dimensions vary with container series – for dimensions of specific unit please contact us.

### ❖ 10 ft Reefer Containers

We offer specifically designed reefers for the static storage market which include features such as easy to open doors, internal lighting, emergency exit door and a man trap alarm.

### ❖ 20ft Reefer Container

The 6 m reefer container is the most popular model in our reefer container lease fleet. The container provides ca. 27 m<sup>3</sup> temperature controlled space for storage and transport use.

### ❖ 40ft Reefer Container

12 m Reefer Containers allow for large scale storage and transport of perishable cargo.

# MIXED-USE UNITS



Very popular as they offer a greater degree of flexibility and accessibility, allowing you to cater for customers with various needs.



## ABOUT COMBINATION UNITS

More often than not space is a premium, and to efficiently maximise the available space on site, it is necessary to use combination units. That is why we have designed and built a range of stackable combination units that offer the full site set-up on a smaller scale.

Our combination units include the following:

### OFFICE / STORE (50/50)

The office / Store (frequently referred to as a 50/50 or fifty/fifty) is the most common combination unit in the portable accommodation industry. Most small builders are happy to utilise a 20' x 8' space to separate a small office with light and window, whilst retaining 10' x 8' of storage. As the unit is converted from a shipping container, the double container doors are still present and provide a high security store for tools.

### OFFICE / CANTEEN (60/40)

The office / canteen is a perfect solution for a small site. It features a 64 sq ft office, suitable for a site manager, as well as a 12' x 8' canteen suitable for 4-6 personnel. This combination unit is converted from an ISO Shipping container, so can be stacked on top of a shipping container to provide secure storage on site. The office / canteen features lighting and heating throughout, and includes a sink, cabinet, and hot water heater in the canteen room.

### CANTEEN / DRY ROOM (70/30)

This is a very popular unit with the oil and gas industry, as it provides a 14' x 8' Canteen room, as well as a small drying room, which is imperative on marine and rig sites. This combination unit is frequently used with a 20' office on top, to allow site managers adequate work and meeting space.

## KENYA

### HEAD OFFICE

Mbaraki wharf near Likoni ferry  
P.O BOX 84162 - 80100,  
Mombasa  
Tel: +254 722 203156  
Tel: +254 733 203156  
Email: summit@alphakenya.com

### NAIROBI

West End Towers, 1st Floor,  
Tower B Muthangari Drive Off  
Waiyaki Way  
Tel: +254 722 203156  
Tel: +254 733 203156  
Email: summit@alphakenya.com

## UGANDA

### KAMPALA

Plot 18-14, Airport Road  
P.O BOX 27929, Kampala  
Tel: +256 393 261046 / 7  
Email: summit@alphakenya.com

## TANZANIA

### DAR ES SALAAM

Ali Hassan Mwinyi Road, Plot  
40, Block 72  
P.O. BOX 8316, Dar es Salaam  
Tel: +255 788 862 204  
Tel: +255 22 2128828 / 54  
Email: summit@alphakenya.com

## MOZAMBIQUE

### PEMBA

Av.Rua do aeroporto, Bairro alto  
gingone no. 2713 Citade de  
Pemba, Cabo Delgado.  
Tel: +258 86 713 11 31 / 33  
Email: summit@alphakenya.com

### PALMA

Bairro ou Zona - Quilaua -  
Exanpasao - I  
Tel: +258 86 713 11 31 / 33  
Email: summit@alphakenya.com

Part of



[www.secoafrika.com/summit](http://www.secoafrika.com/summit)

[www.alphaafrica.com](http://www.alphaafrica.com)

